

2015



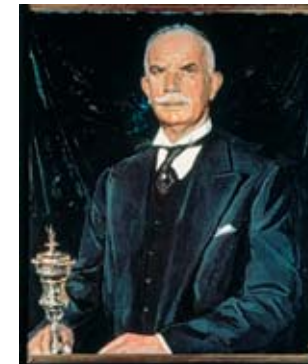
BVLGARI
ROMA

BVLGARI

ROMA

2700 Years of Inspiration

Since 1884, Bulgari has exemplified Italian excellence. Built upon 2700 years of Roman history, Bulgari honors its rich past within its modern designs. Renowned for a stylistic audacity and a penchant for color, a Bulgari piece is immediately recognizable. The sensuality of volume, a love of linearity, and a reverence for the art and architecture of its ancient roots – such characteristics define each creation. With a mastery of artisanal craftsmanship, Bulgari innovates the future of design, and guards the legend of exquisite beauty.



Finding its Roman beginnings as a jewelry shop, Bulgari was founded in 1884 by Greek silversmith Sotirio Bulgari. Today an icon of luxury, Bulgari is known for its unrivalled design, striking volumes and bold colors. Finding endless inspiration in the Eternal City, Bulgari reinterprets the majestic symbols of Rome into exquisite editions of jewelry, watches, accessories and perfumes. Honoring its history, Bulgari engraved the original Latin “V” epigraphy of its name above the prestigious Via dei Condotti store in 1934, inspiring the BVLGARI logo. In 2014, the magnificent DOMVS was built in the flagship store as a gallery to house Bulgari Heritage Collection treasures. The Bulgari name has become synonymous with brilliant color, symbolic storytelling, and peerless craftsmanship – for over 130 years.

BVLGARI

IN ALL THINGS BVLGARI,
LUXURY IS LEGEND

BVLGARI



THE BVLGARI ATELIER

Handcrafting the watch's bridge for mechanical movement, delicately carving a champlé dial, patiently polishing the 110 facets of an *Octo* case... these are but three operations among the meticulous many executed at Bulgari's atelier. Bulgari's Swiss workshops in the watchmaking heart of the world allow the Maison to construct its timepieces entirely in-house: this is the true privilege of the luxury sector.

Beginning with just the idea, Bulgari must produce hundreds of mechanical components to actually develop a watch. Some of its parts are almost invisible to the human eye, yet they must conform to tolerances within one thousandth of a micron. Assembled by technology, manual dexterity, and passion, this trilogy of Bulgari talent produces striking perfection.

BVLGARI

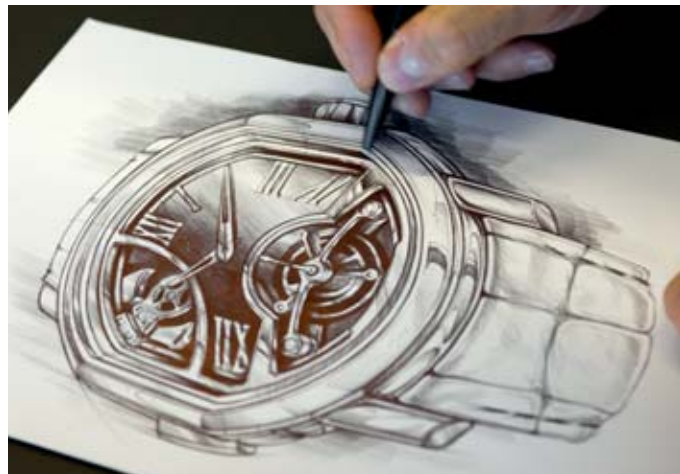




EXCELLENCE

Bulgari Horlogerie defines excellence with every timepiece it brings to life. Like the beating of a heart, expert watchmaking is intricate and complex, with an element of magic. A symphony of perfection, its hundreds of parts must operate in absolute harmony to give and preserve the life of a watch.

Crafted by the experts of the Bulgari atelier, be they master watchmakers, stampers, dial-makers, precision mechanics or bevelers, each timepiece is an accord of expertise and time. *Haute Horlogerie* watches take several months to build – and in the case of the *Grandes Complications* timepieces, an entire year.



Drawing inspiration from its deep Roman roots, Bulgari has always reflected its Italian soul within its magnificent creations. A pioneer of modern design, Bulgari is immediately recognized for its distinctive style. Proud of this renown, and its ancient heritage, Bulgari carries on the tradition of craftsmanship that its homeland is famous for. This Italian soul, combined with the supreme expertise of Swiss watchmaking, produces the very finest timepieces in the world.

BVLGARI



THE BVLGARI BVLGARI ANNIVERSARY

The Roman coins of ancient emperors are redeemed in the BVLGARI BVLGARI signature, as it encircles the elegant collection. With inscriptions inspired by Trajan's Column (113 AD), the BVLGARI BVLGARI emblem celebrates its 40th Anniversary in 2015.

Originating as 100 limited-edition gifts for the brand's best customers in 1975, the first BVLGARI ROMA watch featured this signature engraved on the bezel, causing an instant sensation. In 1977, the paternal watch launched an entire line and an idea: BVLGARI BVLGARI was the very first watch collection to use its emblem as a design element.

BVLGARI





The now-iconic BVLGARI ROMA celebrates its 40th Anniversary by launching commemorative timepieces for men and women in 2015. The collection has withstood the test of time to become a hallmark signature of the brand – combining the very best of in-house Swiss watchmaking and Italian design.

BVLGARI





HISTORY OF LADIES' WATCHES

Bulgari ladies' timepieces are wound in a history that ticks with elegant grace. In the 1920s, Bulgari exquisitely combined Art Deco accents with its custom-made pieces, the only timepieces it created at the time. In the 1940s, Bulgari designed graceful wristwatches to assume the form of the snake, and *Serpenti* was born – an icon of Bulgari today.

With the labor-intensive tubogas technique, Bulgari entwined the symbolic serpent with lithe *Serpenti Tubogas*, another Maison hallmark. *Serpenti* has evolved into colorful gemstone renditions of the snake, striking with unmistakable creativity and craftsmanship.

In 1975, a BVLGARI BVLGARI watch began a revolution, incorporating the brand emblem as an element of its design – for the very first time in history.

Its launch began an innovative tradition that has continued to evolve; BVLGARI ROMA celebrates its 40th Anniversary in 2015. The millennium clocked a trademark signature, when the distinctive B.zero1 collection was born.

Since 2000, Bulgari has innovated exquisite timepieces for women, such as brilliant LVCEA or striking *Diva*, to keep time with feminine grace.

BVLGARI





COLOUR OF TIME

Legends are born to live forever – as stories retold, relics passed on. Bulgari jewelry-watches have their own story to tell, exquisitely recounted on a woman's wrist.

Bulgari's *Diva* collection is a jeweled tale of beauty, inspired by some of the most exquisite divas of our time, curving with the ancient mosaic pattern of the Baths of Caracalla. Distinctive MVSA and *Gemma* collections are expressed with uncommon gemstones in exceptional shapes and volumes, in a sensual play of contours. The jewelry-watch collections sparkle in a brilliant tradition that also includes *Cerchi* – the celestially jeweled timepiece, or *Berries* – the colorful timepiece that combines Bulgari's *savoir-faire* in High Jewelry and *Haute Horlogerie*.

Bulgari craftsmanship has enjoyed wide acclaim, and the Maison was the proud winner of Geneva's 2014 Jewelry Watch Award for its *Diva* High Jewelry watch, dazzling with over ten carats of both diamonds and emeralds.



BVLGARI



DIVA

Previous page: Quartz movement. Case in 18-kt white gold, 39 mm, set with emeralds and diamonds. Dial with snow-set diamond pavé. Bracelet in 18-kt white gold, set with emeralds and diamonds. DVW39D2GD2GD2E

Quartz movement. Case in 18-kt pink gold, 39 mm, set with amethysts, rubellites, peridot beads and brilliant-cut diamonds. White mother-of-pearl dial. Satin strap with 18-kt pink gold folding clasp set with brilliant-cut diamonds. DVP39WGD1ARPL

Quartz movement. Case in 18-kt white gold, 39 mm, set with brilliant-cut diamonds and round-cut diamonds. White mother-of-pearl dial. Satin strap with 18-kt white gold folding clasp set with brilliant-cut diamonds. DVW39WGD2L

Next page: Quartz movement. Case in 18-kt pink gold, 39 mm, set with brilliant-cut diamonds, onyx and coral elements. Snow-set pavé dial. Bracelet in 18-kt pink gold set with brilliant-cut diamonds, onyx and coral elements. DVP39D2GD2GD2CO







DIVA

Quartz movement. Case in 18 kt pink gold, 30 mm, set with brilliant-cut diamonds. Crown in 18 kt pink gold set with a cabochon-cut pink rubellite. Diamond-pavé dial. Satin strap with 18 kt pink gold ardillon buckle. DVP30D2GDL



DIVA

Quartz movement. Case in 18 kt pink gold, 30 mm, set with brilliant-cut diamonds. Gold crown set with a cabochon-cut pink rubellite. Natural acetate dial set with diamond indexes. Satin strap with 18 kt pink gold ardillon buckle. DVP30C5GDL/12

Quartz movement. Case in 18 kt pink gold, 30 mm, set with brilliant-cut diamonds. Crown in 18 kt pink gold set with a cabochon-cut pink rubellite. Natural acetate dial set with diamond indexes. Satin strap with 18 kt pink gold ardillon buckle. DVP30WGDL/12



GEMMA

Previous page: Quartz movement. Case in 18-kt pink gold, 30 mm, set with buff-cut tourmalines, brilliant-cut diamonds and amethyst elements. Snow-set pavé dial. Bracelet in 18-kt pink gold set with tourmalines, amethysts, emeralds, rubellite beads, brilliant-cut diamonds and amethyst elements. GEP30D2GD2TARED2

MVSA

Quartz movement. Case in 18-kt pink gold, 37 mm, set with diamonds, amethysts and mother-of-pearl. White mother-of-pearl dial. Alligator leather strap with 18-kt pink gold ardillon buckle set with brilliant-cut diamonds. MUP37WGD1MOPAL

Quartz movement. Case in 18-kt pink gold, 37 mm, set with diamonds, amethysts and coral. Snow-set pavé dial. Alligator leather strap with 18-kt pink gold ardillon buckle set with brilliant-cut diamonds. MUP37D2GDIACL



CERCHI

Quartz movement. Curved case in 18-kt white gold, 36 mm, set with brilliant-cut diamonds and fancy-cut colored gemstones. White mother-of-pearl dial. Satin strap with 18-kt white gold folding clasp. AEW36D2CWL

Quartz movement. Curved case in 18-kt pink gold, 36 mm, set with brilliant-cut diamonds and fancy-cut colored gemstones. White mother-of-pearl dial. Satin strap with 18-kt pink gold folding clasp. AEP36D2CWL

Next page: Quartz movement. Curved case in 18-kt yellow gold, 36 mm, set with brilliant-cut diamonds and fancy-cut colored gemstones. Black dial. Satin strap with 18-kt yellow gold folding clasp. AE36D2CBL





BERRIES

Previous page: Manufacture caliber with see-through tourbillon

Mechanical movement with automatic winding, BVL 313 caliber with tourbillon with sapphire bridge and 22-kt gold oscillating mass, encrusted with diamonds. Case in 18-kt white gold, 40 mm, set with diamonds. Crown in 18-kt white gold set with an emerald. Dial fully set with brilliant-cut diamonds snow pavé and emerald indexes, blue hands. Blue satin band with 18-kt white gold folding clasp, set with brilliant-cut diamonds. Limited edition of 5 pieces. BEW40D2GD2LTB

Jumping hour and retrograde minutes (180°)

Mechanical manufacture movement with automatic winding. Case in 18-kt pink gold, 40 mm, set with brilliant-cut diamonds, sapphires, emeralds, rubies, and colored gemstones. White mother-of-pearl dial marquetry set with diamond indexes. Satin strap with 18-kt pink gold folding clasp set with brilliant-cut diamonds. BEP40WGD2LR

Manufacture caliber with see-through tourbillon

Mechanical movement with automatic winding, BVL 313 caliber with tourbillon with sapphire bridge and 22-kt gold oscillating mass, set with diamonds. Case in 18-kt pink gold, 40 mm, set with brilliant-cut diamonds, emeralds, pink sapphire and colored gemstones. Black mother-of-pearl dial, with serigraphy decoration and diamond indexes. Green alligator strap with 18-kt pink gold folding clasp, set with brilliant-cut diamonds. Limited edition of 30 pieces. BEP40BGD2LTB



SERPENTI JEWELRY

Coiled around the history of humanity, the serpent is a seductive symbol that has entwined 2700 years of Roman history. From Cleopatra's royal cobra jewels to Elizabeth Taylor's Bulgari serpentine watches, the snake motif reigns mythically, striking in yearly reinterpretations of *Serpenti*. Inspired by its ancient Greco-Roman heritage, in the 1940s Bulgari designed the first *Serpenti* watches – encircling the wrist, they kept time in the snake's head. In serpent designs either realistic or geometrically abstract, *Serpenti* timepieces wind all of Bulgari's hallmarks together: a love for color, the juxtaposition of materials, a supple wearability, and innovative artisanal techniques.

BVLGARI





SERPENTI HIGH JEWELRY

Previous pages: Quartz movement. Case in 18-kt pink gold, 40 mm. Dial and double-spiral bracelet set with brilliant-cut diamonds and turquoises. Eyes in turquoises. SPP40D2GD2T.2T

Quartz movement. Case in 18-kt white gold, 40 mm. Dial and double-spiral bracelet set with brilliant-cut diamonds, brilliant-cut amethysts and brilliant-cut emeralds. Eyes in malachites. SPW40D2GD2EA.2T

Quartz movement. Curved case, 40 mm, and dial in 18-kt white gold set with brilliant-cut diamonds and marquise-cut diamonds. Bracelet in 18-kt white gold set with brilliant-cut and marquise-cut diamonds. Eyes in emeralds. SPW40D1GD2ED1



SERPENTI HIGH JEWELRY

Quartz movement. Curved case, 40 mm, and dial in 18-kt white gold set with brilliant-cut diamonds, marquise-cut diamonds. Bracelet in 18-kt pink gold set with brilliant-cut diamonds. Eyes in rubies. SP40D1WGD2RYGD1



SERPENTI JEWELRY

Quartz movement. Curved case in 18-kt pink gold, 26 mm, set with brilliant-cut diamonds. Black sapphire crystal dial set with diamond indexes. Single-spiral 18-kt pink gold bracelet set with brilliant-cut diamonds and black onyx. SPP26BGD1GD1O.IT

Quartz movement. Curved case in 18-kt white gold, 26 mm, set with brilliant-cut diamonds. White mother-of-pearl dial set with diamond indexes. Double-spiral 18-kt white gold bracelet set with brilliant-cut diamonds. SPW26WGD1GD2.2T



SERPENTI JEWELRY

Quartz movement. Curved case in 18-kt pink gold, 26 mm, set with brilliant-cut diamonds. Black sapphire crystal dial set with brilliant-cut diamond indexes. Single-spiral 18-kt pink gold bracelet set with brilliant-cut diamonds. SPP26BGD1GD1

Quartz movement. Curved case in 18-kt pink gold, 26 mm, set with brilliant-cut diamonds. Red lacquered dial set with brilliant-cut diamond indexes. Single-spiral 18-kt pink gold bracelet set with brilliant-cut diamonds and coated with red lacquer. SPP26C9GD1C9LGD1



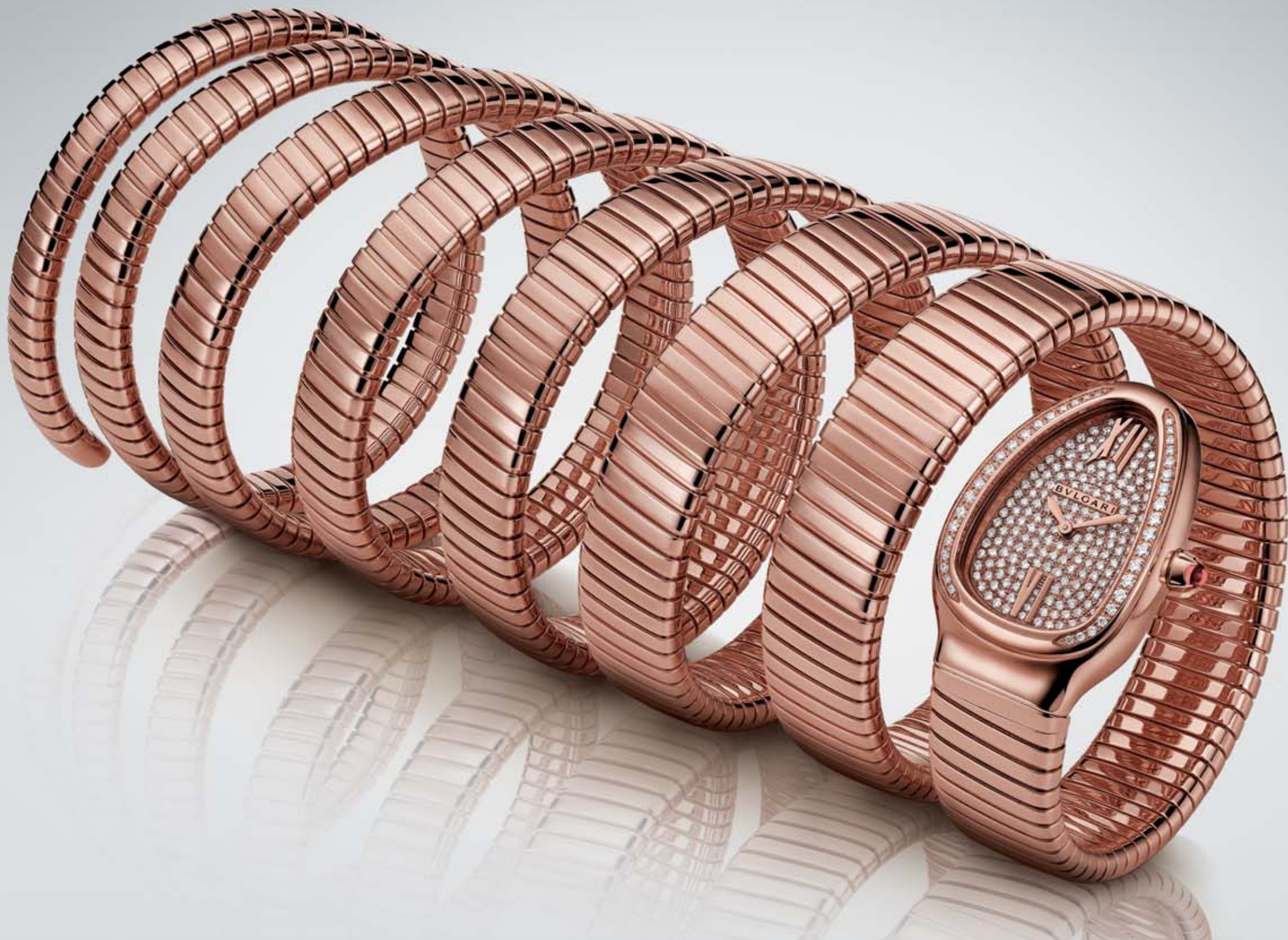
SERPENTI

Merging two of the most iconic symbols of Bulgari design, *Serpenti Tubogas* coils the sinuosity of the snake with the contemporary soul of *tubogas*.

The collection is melded with the shapely lines of the *tubogas* technique – its flexible, tubular liveness produced entirely without soldering – that denotes the sensual curves of a woman. Creating artisanal timepieces, the meticulous *tubogas* technique forms one of Bulgari's trademarks, allowing the Maison to lithely bridge the symbolism of Rome with modern Italian craftsmanship.

A seductive masterpiece, *Serpenti Tubogas* has become an icon of Bulgari design and a stylistic symbol of the jeweler's penchant for innovation.

BVLGARI





SERPENTI TUBOGAS

Previous page: Quartz movement. Curved case in 18-kt pink gold, 35 mm, set with brilliant-cut diamonds. Crown in 18-kt pink gold set with a cabochon-cut pink rubellite. Dial in 18-kt pink gold set with full pavé brilliant-cut diamonds and hand-applied indexes. Seven-spiral 18-kt pink gold bracelet. SPP35D2GDG.7T

Quartz movement. Curved case in 18-kt pink gold, 35 mm, set with brilliant-cut diamonds. Crown in 18-kt pink gold set with a cabochon-cut pink rubellite. Dial in 18-kt pink gold, set with full pavé brilliant-cut diamonds and hand-applied indexes. Double-spiral 18-kt pink gold bracelet. SPP35D2GDG.2T

Quartz movement. Curved case in 18-kt pink gold, 35 mm, set with brilliant-cut diamonds. Crown in 18-kt pink gold set with a cabochon-cut pink rubellite. Black opaline dial with guilloché soleil treatment and hand-applied indexes. Single-spiral 18-kt pink gold bracelet. SPP35BGDG.1T



SERPENTI TUBOGAS

Quartz movement. Curved case in 18-kt yellow gold, 35 mm, set with brilliant-cut diamonds. Crown in 18-kt yellow gold set with a cabochon-cut pink rubellite. Silver opaline dial with guilloché soleil treatment and hand-applied indexes. Double-spiral 18-kt yellow gold bracelet. SP35C6GDG.2T



SERPENTI TUBOGAS

Quartz movement. Steel curved case, 35 mm, with 18-kt pink gold bezel. Crown in 18-kt pink gold set with a cabochon-cut pink rubellite. Silver opaline dial with guilloché soleil treatment and hand-applied indexes. Double-spiral 18-kt pink gold and steel bracelet. SP35C6SPG.2T

Quartz movement. Steel curved case, 35 mm, with 18-kt pink gold bezel set with brilliant-cut diamonds. Crown in 18-kt pink gold set with a cabochon-cut pink rubellite. Black opaline dial with guilloché soleil treatment and hand-applied indexes. Single-spiral 18-kt pink gold and steel bracelet. SP35BSPGD.1T



SERPENTI TUBOGAS

Quartz movement. Steel curved case, 35 mm, set with brilliant-cut diamonds. Steel crown set with a cabochon-cut pink rubellite. Silver opaline dial with guilloché soleil treatment and hand-applied indexes. Double-spiral steel bracelet. SP35C6SDS.2T

Quartz movement. Steel curved case, 35 mm, set with brilliant-cut diamonds. Steel crown set with a cabochon-cut pink rubellite. Black-lacquered polished dial set with diamonds. Single-spiral steel bracelet. SP35BDS.1T



SERPENTI SPIGA

Previous page: Quartz movement. Curved case in 18-kt pink gold, 35 mm, set with brilliant-cut diamonds. Crown in 18-kt pink gold set with a cabochon-cut pink rubellite. Black lacquered dial and hand-applied indexes. Double-spiral 18-kt pink gold and black ceramic bracelet set with brilliant-cut diamonds. SPP35BGDBCUDI.2T

Quartz movement. Curved case in 18-kt pink gold, 35 mm, set with brilliant-cut diamonds. Crown in 18-kt pink gold set with a cabochon-cut pink rubellite. White lacquered dial and hand-applied indexes. Single-spiral 18-kt pink gold and white ceramic bracelet set with brilliant-cut diamonds. SPP35WGDWCGDI.1T

Quartz movement. Steel curved case, 35 mm, set with brilliant-cut diamonds. Steel crown set with a cabochon-cut pink rubellite. Black lacquered dial and hand-applied indexes. Single-spiral steel and black ceramic bracelet set with brilliant-cut diamonds. SP35BDBCSDI.1T



LVCEA

Infusing time with light, Bulgari creates LVCEA. Strong and sensual, LVCEA's modern architecture gleams with a bright and feminine aura. In tribute to its homeland's heritage, LVCEA's design echoes of the ancient Roman sundial. Solar quadrants unearthed from ancient Rome mark mankind's most primordial form of timekeeping; LVCEA counts time with "sundial" Roman numerals or diamond hour markers.

Bulgari, the master of colored gemstones, has carved every LVCEA crown to wink with a noble pink cabochon-cut stone, topped by a perfect diamond. The geometrical links of the bracelet coil to its case's rounded heart: LVCEA is lucent with feminine elegance.

BVLGARI



LVCEA

Previous page: Mechanical movement with automatic winding. Case in 18-kt pink gold, 33 mm, set with brilliant-cut diamonds. Crown in 18-kt pink gold set with a pink cabochon-cut stone and diamond. Black opaline dial with a guilloché soleil treatment set with diamond indexes. Bracelet in 18-kt pink gold set with brilliant-cut diamonds. LUP33BGDGD1D/11

Mechanical movement with automatic winding. Case in 18-kt pink gold, 33 mm, set with brilliant-cut diamonds. Crown in 18-kt pink gold set with a pink cabochon-cut stone and diamond. Silver satiné soleil dial set with diamond indexes. Bordeaux alligator strap with a 18-kt pink gold ardillon buckle. LUP33C6GDL1D/11

Mechanical movement with automatic winding. Case in 18-kt pink gold, 33 mm. Crown in 18-kt pink gold set with a pink cabochon-cut stone and diamond. White mother-of-pearl dial set with diamond indexes. Bracelet in 18-kt pink gold. LUP33WGGD/11



LVCEA

Previous page: Mechanical movement with automatic winding. Case 18-kt white gold, 33 mm, set with brilliant-cut diamonds. Crown in 18-kt white gold set with a pink cabochon-cut stone and diamond. Silver satiné soleil dial set with diamond indexes. Bracelet in 18-kt white gold set with brilliant-cut diamonds. LUW33C6GDD1D/11

Mechanical movement with automatic winding. Case in 18-kt white gold, 33 mm, set with brilliant-cut diamonds. Crown in 18-kt white gold set with a pink cabochon-cut stone and diamond. Silver satiné soleil dial set with diamond indexes. Blue alligator strap with a 18-kt white gold ardillon buckle. LUW33C6GDLD/11





LVCEA

Quartz movement. Steel case, 28 mm, with 18-kt pink gold bezel. Crown in 18-kt pink gold set with a pink cabochon-cut stone and diamond. White mother-of-pearl dial set with diamond indexes. Steel and 18-kt pink gold bracelet. LU28WSPGSPG/12

Mechanical movement with automatic winding. Steel case, 33 mm, with 18-kt pink gold bezel. Crown in 18-kt pink gold set with a pink cabochon-cut stone and diamond. Black opaline dial with a guilloché soleil treatment and gold-plated index and Roman numerals 12 and 6. Steel and 18-kt pink gold bracelet. LU33BSPGSPGD



LVCEA

Mechanical movement with automatic winding. Steel case, 36 mm. Steel crown set with a pink cabochon-cut stone and diamond. Silver opaline dial with a guilloché soleil treatment and rhodium-plated index and Roman numerals 12 and 6. Steel bracelet. LU36C6SSD

Mechanical movement with automatic winding. Steel case, 33 mm. Steel crown set with a pink cabochon-cut stone and diamond. White mother-of-pearl dial set with diamond indexes. Steel bracelet. LU33WSSD/11



BVLGARI BVLGARI

BVLGARI BVLGARI's evolution has yielded the *Catene* timepiece, its delicate band inspired by the vintage French *gourquette* ("nameplate bracelet"). Bulgari first reinterpreted the *gourquette*'s classic chain design in 18-karat pink gold, set with a variety of stones – diamonds, coral, onyx or mother-of-pearl.

Playful *Catene* is designed even more preciously in 2015, with versions in 18-karat white gold and diamonds. *Gourquettes* would dangle from the wrists of icons such as Elizabeth Taylor, Anna Magnani and Grace Kelly; today's *Catene* encircles the glamorous wrists of red-carpet celebrities. Customized as a wrap-around bracelet-watch to coil the wrist once or twice, its flexibility is due to its sophisticated composition – leaving the *Catene* smooth, supple and elegant.



BVLGARI BVLGARI CATENE

Previous page: Quartz movement. Case in 18-kt pink gold, 31 mm. Crown in 18-kt pink gold set with a cabochon-cut pink rubellite. White mother-of-pearl dial set with diamond indexes. Double-twirl 18-kt pink gold gourmette bracelet set with brilliant cut-diamonds. Folding clasp in 18-kt pink gold. BBGP31WGGD1.2T/12

Quartz movement. Case in 18-kt pink gold, 31 mm. Crown in 18-kt pink gold set with a cabochon-cut pink rubellite. White mother-of-pearl dial set with diamond indexes. Double-twirl 18-kt pink gold gourmette bracelet. Folding clasp in 18-kt pink gold. BBGP31WGG.2T/12

Quartz movement. Case in 18-kt pink gold, 31 mm, set with brilliant-cut diamonds. Crown in 18-kt pink gold set with a cabochon-cut pink rubellite. White mother-of-pearl dial set with diamond indexes. Single-twirl 18-kt pink gold gourmette bracelet set with brilliant-cut diamonds. Folding clasp in 18-kt pink gold. BBGP31WGGD1.1T/12



BVLGARI BVLGARI CATENE

Quartz movement. Case in 18-kt white gold, 31 mm, set with brilliant-cut diamonds. Crown in 18-kt white gold set with a cabochon-cut pink rubellite. Silver soleil lacquered dial set with diamond indexes. Single-twirl 18-kt white gold gourmette bracelet set with brilliant-cut diamonds. Folding clasp in 18-kt white gold. BBCW31C6GDGD.IT/12

Next page: Quartz movement. Case in 18-kt pink gold, 31 mm, set with brilliant-cut diamonds. Crown in 18-kt pink gold set with an onyx. Black lacquered dial set with diamonds indexes. Double-twirl 18-kt pink gold gourmette bracelet set with black onyx and brilliant-cut diamonds. BBCP31BGDO.2T/12





I GIARDINI DI BVLGARI

Gems of the 2015 BVLGARI BVLGARI collection, *I Giardini di Bulgari* is a garden of artful watches, blooming with creativity, color, and the finest of Bulgari expertise.

Two *Il Giardino Lariano* depict a jeweled and tranquil swan and are equipped with a tourbillon, the ingenious device invented by watchmakers.

Another flowery masterpiece, *Il Giardino Notturmo*, uses the “marquetry” technique to depict the sky while featuring the poetic Moonphase *Petite Complication*, tracking the phases of the moon. These creations of color use *Métiers d'Art* techniques to achieve the gemstone luxuriance able to capture the colors of the earth.

Just 50 unique pieces will be made of each exclusive *I Giardini di Bulgari*, a bouquet of beauty for the wrist.



BVLGARI BVLGARI IL GIARDINO LARIANO

Mechanical movement with automatic winding, BVL 263 caliber with tourbillon with sapphire bridge and 22-kt gold oscillating mass. Case in 18-kt pink gold, 37 mm, with engraved logo on the bezel. Crown in 18-kt pink gold set with a rubellite. Gold base dial, hand-decorated with Tahiti mother-of-pearl marquetry and “peinture miniature” motifs of a swan, waves, set with brilliant-cut diamonds. A romantic effect of a night sky, achieved by an aventurine insert, a man-made type of glass, discovered in the 17th century in Italy. Brilliant violet alligator band with 18-kt pink gold ardillon buckle. Limited edition of 50 pieces. BBLP37SDGLTB

BVLGARI BVLGARI IL GIARDINO NOTTURNO

Mechanical movement with automatic self-winding and moonphase. Case in 18-kt pink gold, 37 mm, set with brilliant-cut diamonds. Crown in 18-kt pink gold set with a blue sapphire. A marquetry technique dial with blue aventurine depicting the sky, with the moon, and set with diamonds illustrating the stars. A body of water made by white mother-of-pearl. Alongside this, flowers made of white and Tahiti mother-of-pearl set with diamonds. Blue alligator strap with 18-kt pink gold ardillon buckle. BBLP37CDGDLMP

BVLGARI BVLGARI IL GIARDINO LARIANO

Next page: Mechanical movement with automatic winding, BVL 263 caliber with tourbillon with sapphire bridge and 22-kt gold oscillating mass. Case in 18-kt pink gold, 37 mm, with bezel set with brilliant-cut diamonds. Crown in 18-kt pink gold set with a rubellite. Gold base, semi full pavé dial, encrusted with brilliant-cut diamonds, hand-decorated with Tahiti mother-of-pearl marquetry and “peinture miniature” motifs of a swan and waves. Brilliant rose strap with 18-kt pink gold ardillon buckle. Limited edition of 50 pieces. BBLP37SDGDLTB





BVLGARI BVLGARI

Previous page: Mechanical movement with automatic winding. Steel case, 33 mm, with 18-kt pink gold bezel. White mother-of-pearl dial set with diamond indexes. Steel and 18-kt pink gold bracelet. Medium model. BBL33WSPG/12

Mechanical movement with automatic self-winding. Case in 18-kt pink gold, 33 mm. White mother-of-pearl dial set with diamond indexes. Bracelet in 18-kt pink gold. Medium model. BBLP33WGG/12

Mechanical movement with automatic winding. Case in 18-kt pink gold, 33 mm, set with brilliant-cut diamonds. White mother-of-pearl dial set with diamond indexes. White alligator strap with 18-kt pink gold ardillon buckle. Medium model. BBLP33WGDL/12



BVLGARI BVLGARI

Mechanical movement with automatic winding. Steel case, 33 mm, with 18-kt pink gold bezel. Brown soleil lacquered dial set with diamond indexes. Steel and 18-kt pink gold bracelet. Medium model. BBL33C11SPG/12

Mechanical movement with automatic winding. Steel case, 37 mm, with 18-kt pink gold bezel. White lacquered dial with gold-plated indexes and Roman numerals 12 and 6. Steel and 18-kt pink gold bracelet. Medium model. BBL37WSSPGD



BVLGARI BVLGARI

Quartz movement. Steel case, 26 mm. Black lacquered dial with rhodium-plated indexes and Roman numerals 12 and 6. Steel bracelet. Small model. BBL26BSSD

Quartz movement. Steel case, 26 mm, set with brilliant-cut diamonds. White mother-of-pearl dial set with diamond indexes. Steel bracelet. Small model. BBL26WSDS/12



BVLGARI BVLGARI TUBOGAS

Quartz movement. Steel case, 26 mm, with 18-kt pink gold bezel engraved with BVLGARI ROMA, celebrating its 40th Anniversary. Brown soleil lacquered dial set with diamond indexes. Steel and 18-kt pink gold tubogas bracelet in small size. BBL262TC11SPG/12.S

Quartz movement. Steel case, 26 mm. Black lacquered dial with rhodium-plated indexes and Roman numerals 12 and 6. Steel tubogas bracelet. Medium size. BBL262TBSS.M



BVLGARI BVLGARI TUBOGAS

Quartz movement. Case in 18-kt pink gold, 19 mm. Black lacquered dial set with diamond indexes. Tubogas bracelet in 18-kt pink gold. BBLP191TBGG/12

Quartz movement. Case in 18-kt pink gold, 26 mm. Black lacquered dial set with diamond indexes. Tubogas bracelet in 18-kt pink gold. Medium size. BBLP262TBGG/12.M



B.ZERO1

Previous page: Quartz movement. Steel and 18-kt pink gold case, 23 mm, with 18-kt pink gold bezel. Black ceramic ring. Black lacquered dial set with diamond indexes. Black ceramic bangle. Medium size. BZ23BSGCC/12.M

Quartz movement. Steel case, 23 mm. Black lacquered dial with dot indexes. Steel bangle. Small size. BZ23BSS.S

Quartz movement. Steel case, 23 mm, set with brilliant-cut diamonds. Blue mother-of-pearl dial set with diamond indexes. White calf strap with steel ardillon buckle. BZ23BSD/12



ITALIAN MAGNIFICENCE

Genius and creativity, hand in hand, create what endures. From ancient times to present day, Italy has been renowned for achievements in architecture, fine arts, science, engineering. This Italian Genius has left us with the innovations that paved the paths of history: Imperial Roman sculptures, Renaissance masterpieces, Galilean astronomy, civil engineering feats, Leonardo da Vinci inventions. Facing risk, Italian innovators have always dared to invent the new and improve the old. Bulgari is of Rome – a natural part of this heritage – and reinterprets the Italian Genius in its own elegant style. Its timepieces stem from these roots, blooming magnificent and complex from the seeds of ingenuity.

BVLGARI

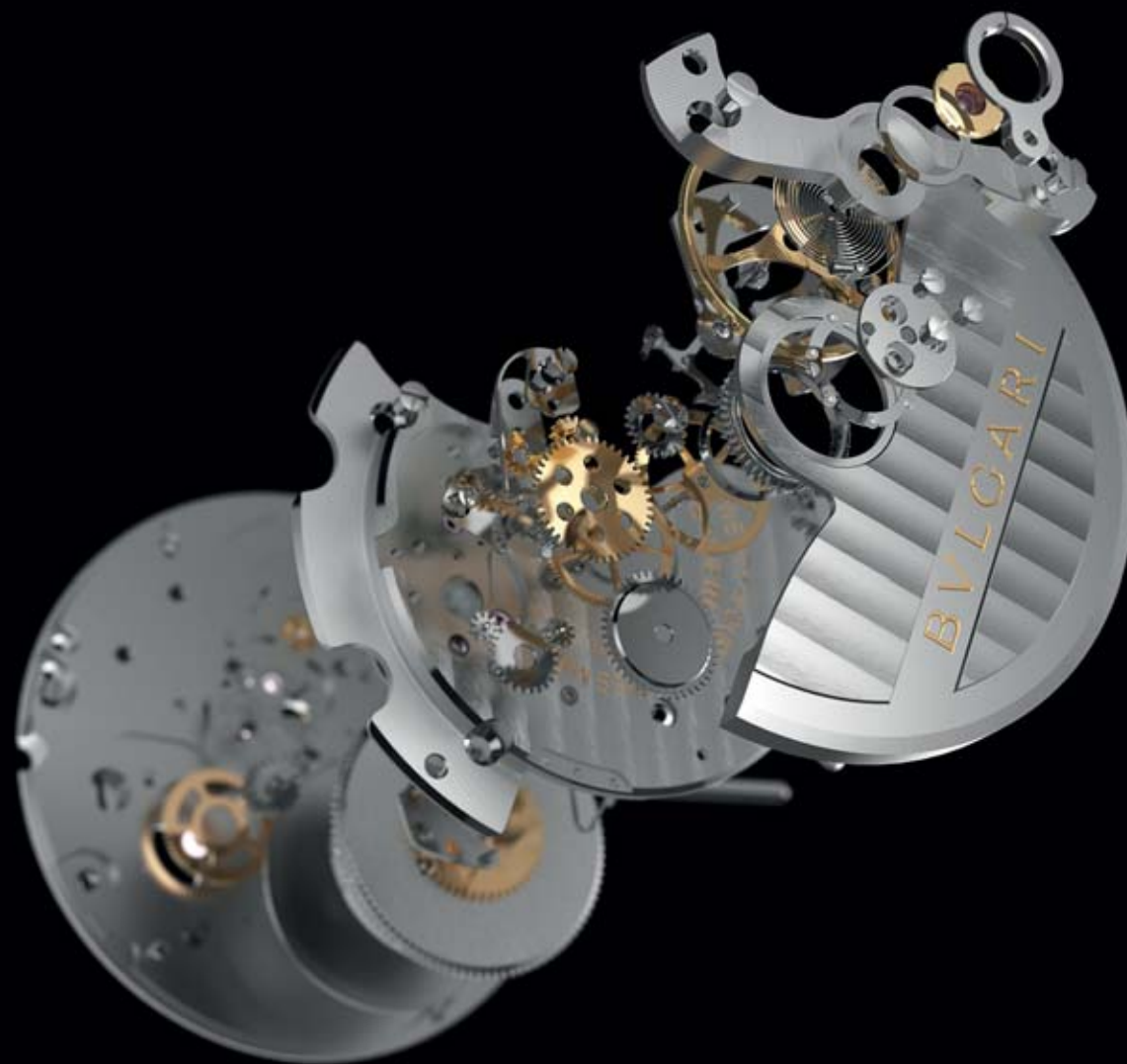


solotempo

The Bulgari atelier can produce some of the most complicated watches on the planet; foremost, it defines the basics.

Solotempo, Italian for "only time," records every millisecond with infallible precision. With a pure mastery of its in-house BVL 191 caliber, Bulgari makes it look simple.

The sophisticated *Solotempo* caliber (BVL 191) is one of the few mechanical calibers made in-house, a feat left to the experts. Its movement is automatically wound, via an oscillating wheel weight mounted on a ceramic ball bearing. With an instant date changer, the watch also features a stop-seconds device to block the balance when the crown is pulled out. The caliber is equipped with a disconnecting system to avoid wear on the pinions; this saves energy when the winding system is moved by the crown or the oscillating weight.





finissimo

Mechanical watches are not always known for their fineness, as it presents an additional challenge to the watchmaker.

Bulgari is up to the task. The *Finissimo*'s extra-thin caliber, developed and manufactured in-house, is a marvel of man-made nature – set between two micro-thin plates, about as fine as a human hair. The mechanical hand-wound movement (BVL 128), which is only 2.23 mm thick, is housed in the emblematic *Octo* and BVLGARI ROMA cases. With its minimalist hour, minute display, a small seconds hand between 7 and 8 o'clock, and its back-side power-reserve indication (around 65 hours), the *Finissimo* is as elegant as it is fine.



GRANDES COMPLICATIONS

The *calibers*, or “movements” of a mechanical watch are, in fact, exquisite works of art. The extraordinary assembly of their components – up to a thousand in the most sophisticated complications – must be fitted into a space of a few cubic centimeters. Meanwhile, the watch's miniaturized motor must infallibly keep the rhythm of time.

Incredibly, this timekeeper can maintain a complex chiming device, foresee a full calendar, even track the phases of the moon. Yet it is most strikingly a construction of pure elegance on the wrist. Executing such a complex endeavor is the pride and pastime of Bulgari watchmakers. Whether engineers, mechanics, master watchmakers, or designers, these dexterous artisans have accumulated years of experience: they are the masters of watchmaking *savoir-faire*.

BVLGARI





OCTO COLLECTION

History has hailed Italian artists, like Leonardo da Vinci, who created masterpieces as well as technological designs.

With Bulgari's Italian Genius, *Octo* combines its trademark octagon shape – inspired by the Roman Massentius Basilica (310 AD) – with the perfection of Swiss-made movements.

This distinctive *Octo* shape embodies the Bulgari man: his fortitude of personality, his penchant for architectural design, his appreciation of the contemporary aesthetic. Breaking from convention, *Octo* exists outside typical *Haute Horlogerie*, forging the avant-garde. Its bold intersection of circle and square creates an octagon, delineating time in a complex yet perfect geometry. *Octo's* 110 separate facets are meticulously worked by hand, with alternated polished and brushed finishes, forming the shape of charisma.

BVLGARI



OCTO SOLOTEMPO

Mechanical manufacture movement with automatic winding and instantaneous date, BVL 191 - Solotempo caliber decorated with côtes de Genève, anglage and colimaçonée finishing. Power reserve of 42 hours. Case in 18-kt pink gold, 38 mm, with transparent case back. Crown set with ceramic. Silver dial with hand-applied indexes. Integrated alligator strap with 18-kt pink gold folding buckle. Water-resistant up to 100 meters. BGOP38WGDL

Mechanical manufacture movement with automatic winding and date, BVL 193 caliber decorated with perlage, côtes de Genève and anglage finishing. Double barrel, power reserve of 50 hours. Case in 18-kt pink gold, 41 mm, with transparent case back. Crown set with ceramic. Black lacquered polished dial with hand-applied indexes. Integrated alligator strap with 18-kt pink gold folding buckle. Water-resistant up to 100 meters. BGOP41BGDL



OCTO SOLOTEMPO

Mechanical manufacture movement with automatic winding and instantaneous date, BVL 191 - Solotempo caliber decorated with côtes de Genève, anglage and colimaçonée finishing. Power reserve of 42 hours. Case in 18-kt pink gold, 38 mm, with transparent case back. Crown set with ceramic. Silver dial with hand-applied indexes. 18-kt pink gold bracelet. Water-resistant up to 100 meters. BGOP38WGGD

Mechanical manufacture movement with automatic winding and instantaneous date, BVL 191 - Solotempo caliber decorated with côtes de Genève, anglage and colimaçonée finishing. Power reserve of 42 hours. Steel case, 38 mm, with 18-kt pink gold crown set with ceramic and transparent case back. Silver dial with hand-applied indexes. Steel and 18-kt pink gold bracelet. Water-resistant up to 100 meters. BGO38WSPGD



OCTO SOLOTEMPO

Mechanical manufacture movement with automatic winding and instantaneous date, BVL 191 - Solotempo caliber decorated with côtes de Genève, anglage and colimaçonée finishing. Power reserve of 42 hours. Steel case, 38 mm, with transparent case back. Crown set with ceramic. Blue sunray and lacquered polished dial with hand-applied indexes. Steel bracelet. Water-resistant up to 100 meters. BGO38C3SSD

Mechanical manufacture movement with automatic winding and instantaneous date, BVL 191 - Solotempo caliber decorated with côtes de Genève, anglage and colimaçonée finishing. Power reserve of 42 hours. Steel case, 38 mm, with transparent case back. Crown set with ceramic. Black lacquered polished dial with hand-applied indexes. Integrated alligator strap with stainless steel folding buckle. Water-resistant up to 100 meters. BGO38BSLD



OCTO VELOCISSIMO

Integrated chronograph with column wheel mechanism

Mechanical manufacture high-frequency chronograph (5Hz) with silicon escapement, automatic winding and date, BVL 328 - Velocissimo caliber decorated with perlage, côtes de Genève and anglage finishing. Power reserve of 50 hours. Case in 18-kt pink gold, 41 mm, with transparent case back. Crown set with ceramic. Black lacquered polished dial and hand-applied indexes. Integrated alligator strap with 18-kt pink gold folding buckle. Water-resistant up to 100 meters. BGOP41BGLDCH

Mechanical manufacture high-frequency chronograph (5Hz) with silicon escapement, automatic winding and date, BVL 328 - Velocissimo caliber decorated with perlage, côtes de Genève finishing. Power reserve of 50 hours. Steel case, 41 mm, with transparent case back. Crown set with ceramic. Black lacquered polished dial and hand-applied indexes. Steel bracelet. Water-resistant up to 100 meters. BGO41BSSDCH



OCTO ALL BLACKS

Masters of their respective fields, the All Blacks and Bulgari unite to create the Special Edition *Octo All Blacks*, for their joint 130th Anniversary. With charisma, performance and excellence, the mystical New Zealand rugby team is the best in the world, a natural partner for the Italian master of design. Retaining the original attributes of the Bulgari *Octo*, the sophisticated timepiece reveals its BVL 193 caliber through the smoky-sapphire crystal of its case back, stamped with the All Blacks' silver fern. Honoring the ancestral force that has driven both names for decades, a traditional Maori mask is tattooed on the watch face.

Mechanical manufacture movement with automatic winding and date, BVL 193 caliber decorated with côtes de Genève, anglage and colimaçonée finishing. Double barrel, power reserve of 50 hours. Steel case, 41 mm, with black Diamond Like Carbon (DLC) treatment and transparent case back with All Blacks® logo. Crown set with ceramic. "Maori tattoo" patterned dial with hand-applied indexes. Integrated rubberized alligator strap with steel folding buckle, DLC treated. Water-resistant up to 100 meters. Special Edition. BGO41BSBLD/AB



OCTO MASERATI

The Bvlgari *Octo Maserati* combines two paragons of Italian style. With aesthetic refinement, performance, and a sporting spirit, the commonality between the mechanical powerhouses obtains its highest expression in this sophisticated timepiece. Performance is key to the *Octo Maserati*: the limited edition features a *Velocissimo* caliber (BVL 328), 3-compax high-frequency integrated chronograph with silicon escapement, a champlévé dial, a tachymetric bezel, and a personalized sapphire on the case back with Maserati's logo.

Integrated chronograph with column wheel mechanism

Mechanical manufacture high-frequency chronograph (5Hz) with silicon escapement, automatic winding and date, BVL 328 - *Velocissimo* caliber decorated with perlage, côtes de Genève finishing. Power reserve of 50 hours. Steel case, 41 mm, with tachymetric bezel and semi-transparent case back with Maserati logo and mention "1 OUT OF 1914". Crown set with ceramic. Lacquered polished dial executed with champlévé technique and hand-applied indexes. Integrated alligator strap with steel folding buckle. Water-resistant up to 100 meters. Limited edition. BGO41C3SLDCH/MAS





OCTO MONO-RETRO

Jumping hours and retrograde minutes (210°)

Mechanical manufacture movement with automatic winding, BVL 262 caliber decorated with côtes de Genève, anglage and colimaçonée finishing. Power reserve of 42 hours. Steel case, 38 mm, with transparent case back. Crown set with ceramic. Black lacquered polished dial with hand-applied numerals. Integrated alligator strap with steel folding buckle. Water-resistant up to 100 meters. BGO38BSLR

Mechanical manufacture movement with automatic winding, BVL 262 caliber decorated with côtes de Genève, anglage and colimaçonée finishing. Power reserve of 42 hours. Case in 18-kt pink gold, 38 mm, with transparent case back. Crown set with ceramic. Black lacquered polished dial with hand-applied numerals. Integrated alligator strap with 18-kt pink gold folding buckle. Water-resistant up to 100 meters. BGO38BGLR



OCTO BI-RETRO

Jumping hours, retrograde minutes (210°) and date (180°)

Mechanical manufacture movement with automatic winding, BVL 300 caliber decorated with côtes de Genève, anglage and colimaçonée finishing. Power reserve of 42 hours. Steel case, 38 mm, with transparent case back. Crown set with ceramic. Black lacquered polished dial with hand-applied figures. Integrated alligator strap with steel folding buckle. Water-resistant up to 100 meters. BGO38BSLDBR

Mechanical manufacture movement with automatic winding, BVL 300 caliber decorated with côtes de Genève, anglage and colimaçonée finishing. Power reserve of 42 hours. Case in 18-kt pink gold, 38 mm, with transparent case back. Crown set with ceramic. Black lacquered polished dial with hand-applied numerals. Integrated alligator strap with 18-kt pink gold folding buckle. Water-resistant up to 100 meters. BGO38BGLDBR

THE THINNEST
TOURBILLON
MOVEMENT
IN THE WORLD





OCTO FINISSIMO TOURBILLON

The *Octo Finissimo Tourbillon* features the world's thinnest tourbillon movement of only 1.95 mm.

Bulgari engineers reduced the tourbillon cage to fit the space of this ultra-thin movement, developing special ball bearings to accommodate the caliber. With a manual winding movement and the most intricate of decoration, the *Finissimo Tourbillon* is cased in platinum or pink-gold just 5.00 mm thick: this is the finest tourbillon watch in the world.



FINISSIMO BVL 268 CALIBER

EXTRA-THIN FLYING TOURBILLON

Mechanical movement with manual winding, extra-thin flying tourbillon with a specific ball-bearing system. World's thinnest tourbillon caliber BVL 268 (thickness of 1.95 mm), decorated by hand with côtes de Geneve finishing. Power reserve of 52 hours.



OCTO FINISSIMO TOURBILLON

Case in 18-kt pink gold, 40 mm, with transparent case back. Crown in 18-kt pink gold with black ceramic insert. Black lacquered dial with opening above the tourbillon cage. Black alligator strap with 18-kt pink gold ardillon buckle. BGOP40BGLTBT



OCTO FINISSIMO PETITE SECONDE

Extra-thin case in 18-kt pink gold, 40 mm (thickness of 5.15 mm), with transparent case back. Crown set with ceramic. Black polished lacquered dial with raised indexes. Integrated alligator strap with 18-kt pink gold ardillon buckle. BGOP40BGLXT



OCTO FINISSIMO PETITE SECONDE

“Details make perfection, and perfection is not a detail,” quipped da Vinci. Bulgari met the challenge of perfection in the *Octo Finissimo Petite Seconde*. This in-house manufactured timepiece represents one of the most extreme feats a master watchmaker can undertake, as its extremely miniaturized parts were created with the “superfine” art of *Finissimo*.

Its case back is proudly on display, so that one may view its tiniest details in perfect action.



FINISSIMO BVL 128 CALIBER EXTRA-THIN CALIBER WITH SMALL SECOND AND BACK-SIDE POWER-RESERVE INDICATION

Mechanical manufacture movement with manual winding, small second and back-side power-reserve indication (thickness of 2.23 mm). BVL 128 caliber decorated by hand with côtes de Genève, anglage and perlage finishing. Power reserve of 65 hours.



BVLGARI BVLGARI COLLECTION

Certain signature collections are unmistakably Bulgari – recognizable, distinctive and bold. 1975 BVLGARI BVLGARI was the original collection, the forefather to the rest. Its emblem was featured in the design, for the first time ever in a watch; this pioneer began a horological revolution.

For the timepiece's 40th Anniversary in 2015, Bulgari pays tribute with new models – their bezel engraved with BVLGARI ROMA, the initial emblem used by the Italian watchmaker.

BVLGARI ROMA *Finissimo* is among those that honor this history as they make their own, while *Solotempo*, 100% designed and manufactured in-house, and complex *Velocissimo* complete the striking collection.

BVLGARI



BVLGARI ROMA FINISSIMO PETITE SECONDE

Extra-thin steel case, 41 mm (thickness of 5.15 mm), with transparent case back. Crown set with ceramic. Black polished lacquered dial with raised indexes. Alligator strap with steel ardillon buckle. BB41BSLXT



BVLGARI ROMA FINISSIMO PETITE SECONDE

When the first 1975 BVLGARI ROMA watch was produced as just a 100-piece edition, it set off a wildfire of demand – the rest is watchmaking history. For its original watch collection's 40th Anniversary, Bulgari introduces the new BVLGARI ROMA *Finissimo*. With a 100% in-house extra-thin caliber, the timepiece was created using the “superfine” art of *Finissimo*, requiring at least three years of development. Each handsome watch engraves BVLGARI ROMA around the bezel, encircling the precious timepiece like the markings of an ancient Roman coin.



FINISSIMO BVL 128 CALIBER EXTRA-THIN CALIBER WITH SMALL SECOND AND BACK-SIDE POWER-RESERVE INDICATION

Mechanical manufacture movement with manual winding, small seconds and back-side power-reserve indication (thickness of 2.23 mm). BVL 128 caliber decorated by hand with côtes de Genève, anglage and perlage finishing. Power reserve of 65 hours.



BVLGARI ROMA FINISSIMO TOURBILLON

Bold with Bulgari style, the BVLGARI ROMA represents a beautiful demonstration of the Maison's *savoir-faire*, complete with complicated movements and refined materials.

Visually featuring one of the most sophisticated *Grandes Complications* movements that a master watchmaker can create, the distinctive BVLGARI ROMA *Finissimo Tourbillon* watch is also equipped with the world's thinnest tourbillon movement, only 1.95 mm.



FINISSIMO BVL 268 CALIBER

EXTRA-THIN FLYING TOURBILLON

Mechanical movement with manual winding, extra-thin flying tourbillon with a specific ball bearing system. World's thinnest tourbillon caliber BVL 268 (1.95 mm thick), decorated by hand with *côtes de Genève* finishing. Power reserve of 52 hours.



BVLGARI ROMA FINISSIMO TOURBILLON

Case in 18-kt pink gold, 41 mm, with transparent case back. Crown in 18-kt pink gold with black ceramic insert. Black lacquered dial with opening above the tourbillon cage. Brown alligator strap with 18-kt pink gold ardillon buckle. BBP41BGLTBT



BVLGARI BVLGARI VELOCISSIMO

Integrated chronograph with column wheel mechanism

Mechanical manufacture high-frequency chronograph (5Hz) with silicon escapement, automatic winding and date, BVL 328 - Velocissimo caliber decorated with perlage, côtes de Genève finishing. Power reserve of 50 hours. Steel case, 41 mm, with transparent case back and 18-kt pink gold bezel and crown set with ceramic. Lacquered polished dial with Super-LumiNova® and hand-applied indexes. Steel and 18-kt pink gold bracelet. BB41BSPGDCH

BVLGARI BVLGARI SOLOTEMPO

Mechanical manufacture movement with automatic winding and instantaneous date, BVL 191 - Solotempo caliber decorated with côtes de Genève, anglage and colimaçonée finishing. Power reserve of 42 hours. Case in 18-kt pink gold, 39 mm, with transparent case back. Crown set with ceramic. Lacquered polished dial with hand-applied indexes. Integrated alligator strap with 18-kt pink gold ardillon buckle. BBP39BGLD



BVLGARI BVLGARI SOLOTEMPO

Mechanical manufacture movement with automatic winding and instantaneous date, BVL 191 - Solotempo caliber decorated with côtes de Genève, anglage and colimaçonée finishing. Power reserve of 42 hours. Steel case, 39 mm, with transparent case back. Crown set with ceramic. Silver opaline dial with hand-applied indexes. Steel bracelet. BB39WSSD

Mechanical manufacture movement with automatic winding and instantaneous date, BVL 191 - Solotempo caliber decorated with côtes de Genève, anglage and colimaçonée finishing. Power reserve of 42 hours. Steel case, 41 mm, with transparent case back. Crown set with ceramic. Blue dial with hand-applied indexes. Integrated alligator strap with steel folding buckle. BB41C3SLD



DIAGONO COLLECTION

Pioneers of brave ideas have no predecessor to guide them. Defying convention and the law, Italian scientist Galileo Galilei was first to insist that the earth revolved around the sun. The “father of science” has since inspired brave innovations – such as 2015's *Diagono Magnesium's* revolutionary use of magnesium, a light and strong metal which is even used in aerospace; PEEK – a state of the art polymer; and a unique lacquer originating from engine coatings on Italian sports cars.

Combining cutting-edge materials and utmost performance, the *Diagono* collection is always known to be entirely sporty yet elegant. Named after ancient Greek “agòn” – competitions to determine the best debaters or athletes – the architecture of *Diagono* brings out the best in Bulgari engineering.

From deep-diving *Scuba* to chronograph-timed *Velocissimo*, *Diagono* are constructed of innovative materials while recognizably featuring the BVLGARI BVLGARI signature around the bezel.

BVLGARI



DIAGONO MAGNESIUM

Mechanical movement with automatic winding. Power reserve of 42 hours. Magnesium & PEEK case, 41 mm, with ceramic bezel. Dial with proprietary lacquer and raised indexes. Rubber strap with ardillon buckle. DG41C14SMCVD

Mechanical movement with automatic winding. Power reserve of 42 hours. Magnesium & PEEK case, 41 mm, with ceramic bezel. Dial with proprietary lacquer and raised indexes. Rubber strap with ardillon buckle. DG41C6SMCVD



DIAGONO MAGNESIUM

Mechanical movement with automatic winding. Power reserve of 42 hours. Magnesium & PEEK case, 41 mm, with ceramic bezel. Dial with proprietary lacquer and raised indexes. Rubber strap with ardillon buckle. DG41C11SMCVD

Mechanical movement with automatic winding. Power reserve of 42 hours. Magnesium & PEEK case, 41 mm, with ceramic bezel. Dial with proprietary lacquer and raised indexes. Rubber strap with ardillon buckle. DG41C3SMCVD



DIAGONO ULTRANERO CHRONOGRAPHE

Mechanical chronograph with automatic winding and date, B130 caliber. Power reserve of 42 hours. Steel case, 42 mm, with black Diamond Like Carbon (DLC) treatment and black ceramic bezel. Steel and black ceramic crown and steel push-buttons. Black dial and hand-applied indexes with Super-LumiNova®. Rubber and steel strap with steel ardillon buckle. Water-resistant up to 100 meters. DG42BBSCVDCH

Mechanical chronograph with automatic winding and date, B130 caliber. Power reserve of 42 hours. Steel case, 42 mm, with black Diamond Like Carbon (DLC) treatment and 18-kt pink gold bezel. Crown in 18-kt pink gold and black ceramic and black ceramic push-buttons. Black dial and hand-applied pink gold-plated indexes with Super-LumiNova®. Rubber and steel strap with steel ardillon buckle, both treated with Diamond Like Carbon (DLC). Water-resistant up to 100 meters. DG42BBSPGVDCH



DIAGONO VELOCISSIMO

Integrated chronograph with column wheel mechanism

Mechanical manufacture high-frequency chronograph (5Hz) with silicon escapement, automatic winding and date, BVL 328 - Velocissimo caliber decorated with perlage, côtes de Genève and anglage finishing. Power reserve of 50 hours. Steel case, 41 mm. Black lacquered dial with hand-applied indexes. Steel bracelet. DG41BSSDCH

Mechanical manufacture high-frequency chronograph (5Hz) with silicon escapement, automatic winding and date, BVL 328 - Velocissimo caliber decorated with perlage, côtes de Genève and anglage finishing. Power reserve of 50 hours. Case in 18-kt pink gold and steel, 41 mm. Silver opaline dial with hand-applied indexes. Bracelet in 18-kt pink gold and steel. DG41WSPGDCH



DIAGONO SCUBA

Mechanical manufacture movement with automatic winding and instantaneous date, BVL 191 - Solotempo caliber decorated with côtes de Genève, anglage and colimaçonée finishing. Power reserve of 42 hours. Case in 18-kt pink gold, 41 mm. Black dial with hand-applied indexes. Rubber strap with 18-kt pink gold ardillon buckle. Water-resistant up to 300 meters. DPP41BGVSD

Mechanical manufacture movement with automatic winding and instantaneous date, BVL 191 - Solotempo caliber decorated with côtes de Genève, anglage and colimaçonée finishing. Power reserve of 42 hours. Case in 18-kt pink gold and steel, 41 mm. Silver opaline dial with hand-applied indexes. Bracelet in 18-kt pink gold and steel. Water-resistant up to 300 meters. DP41WSPGSD



DIAGONO SCUBA

Mechanical manufacture movement with automatic winding and instantaneous date, BVL 191 - Solotempo caliber decorated with côtes de Genève, anglage and colimaçonée finishing. Power reserve of 42 hours. Steel case, 41 mm. Black dial with hand-applied indexes. Steel bracelet. Water-resistant up to 300 meters. DP41BSSSD

Mechanical manufacture movement with automatic winding and instantaneous date, BVL 191 - Solotempo caliber decorated with côtes de Genève, anglage and colimaçonée finishing. Power reserve of 42 hours. Steel case, 41 mm. Black dial with hand-applied indexes. Rubber strap with ardillon buckle. Water-resistant up to 300 meters. DP41BSVSD



GRANDES COMPLICATIONS

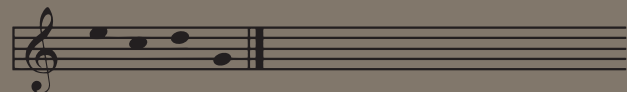
The exquisitely detailed nature of watchmaking makes veritable artists of those who have mastered it. Bulgari watchmakers comprise the rare elite, able to realize the utmost of complicated timepieces: chiming watches, tourbillons, perpetual calendars, watches that track the phases of the moon. Consisting of up to 1,000 components, achieving such a timepiece becomes the pride of a master watchmaker. Further still, Bulgari has the rare capacity to create its watch components completely in-house.

With one of the widest ranges of complications on the market, each Bulgari component is assembled, adjusted and decorated entirely by hand; it takes around a year to complete a single *Grande Complication* timepiece.

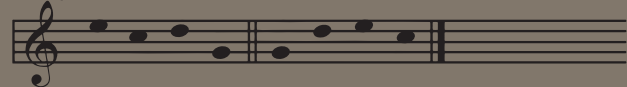
With an unmatched *savoir-faire* and a veritable passion, Bulgari craftsmen are proud to serve as the finest in the world.

BVLGARI

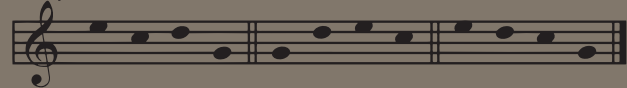
1st quarter



2nd quarter



3rd quarter



CHIMING

A magical construction of mechanics, technique and history, Bulgari's chiming watches strike a rare specialty, realized by the most elite of watchmakers. Transforming the passage of time into audible sounds is a complex art – and it becomes a watchmaker's greatest achievement.

Very few will ever attempt to create a chiming watch, yet Bulgari master watchmakers at the Le Sentier workshop handcraft them entirely in-house. Manually adjusting the “gongs” for a crystalline sound, *Carillon* watches have two or more chimes; Bulgari Grande Sonnerie watches have four – able to play the Big Ben melody from the Palace of Westminster in perfect pitch, and sing the praises of Bulgari expertise.

BVLGARI





L'AMMIRAGLIO DEL TEMPO

Inspired by the heritage of naval watches, Bulgari introduced *L'Ammiraglio del Tempo*, combining the utmost of chiming watches and *Haute Horlogerie*. Marine chronometers equipped with *détente* escapement - the most important horological invention from the 18th century - would help the sailors to determine their ship's longitudinal location. *L'Ammiraglio del Tempo* is the only wristwatch to combine two highly exclusive mechanisms: the *détente* escapement and minute repeater. All the while, its four gongs and hammers chime the famous Westminster carillon melody.



DR 7301 CALIBER
MINUTE REPEATER, CARILLON WESTMINSTER, 4 HAMMERS AND CATHEDRAL GONGS,
DETENTE ESCAPEMENT, CONSTANT FORCE, CYLINDRICAL BALANCE SPRING
Mechanical manufacture movement with manual winding. Caliber with haut de gamme finishing. Power reserve of 48 hours.



L'AMMIRAGLIO DEL TEMPO

Case in 18-kt pink gold, 50 mm, with transparent case back. Gold dial with champlévé indexes. Minute repeater mysterious activation. Black alligator strap with 18-kt pink gold folding buckle. BRRP50BGLDEMR



CARILLON TOURBILLON

Case in 18-kt pink gold, 48 mm, with numbered crown in 18-kt pink gold and transparent case back. Brown alligator strap with 18-kt pink gold folding buckle. Limited edition of 30 pieces. BRRP48GLTBM/N



CARILLON TOURBILLON

A chiming watch of the prestigious carillon variety must incorporate more than two hammers; the *Carillon Tourbillon* chimes with three. The architecture of this timepiece, with its complex tourbillon movement, the delicately cut shape of the bridges, and the positioning of its 327 components, strikes a fine contrast to its slender beauty.

Proudly, the 75-hour power-reserve display with the manual winding caliber is visible through the back of the case.



DR 3300 CALIBER
CARILLON WITH THREE HAMMERS AND GONGS, SILENT REGULATOR, MINUTE REPEATER, TOURBILLON

Mechanical manufacture movement with manual winding, caliber decorated by hand. Power-reserve indication on the reverse side of the movement. Power reserve of 75 hours.



COMMEDIA DELL'ARTE

To honor a predecessor in the artistic domain, Bulgari produced *La Commedia Dell'Arte*, with only eight limited-edition pieces per design. This 16th-century Italian theatrical genre featured masked actors who would perform improvisations outdoors.

Hand-decorated dials using "peinture miniature," "gravure" and "ciselage" techniques render the watch collection into artful luxury. Featuring typical Italian landscapes, the characters perform music, sing and even move when the minute repeater is activated.



BVL 618 CALIBER

AUTOMATON WITH MINUTE REPEATER AND CATHEDRAL GONGS

Mechanical manufacture movement with manual winding. Automaton function with various animated parts visible on the dial, starting with the minute repeater activation. Power reserve of 48 hours.



COMMEDIA DELL'ARTE

Magsonic® middle case in 18-kt white gold, 54 mm, framed on either side by a bezel and back in 18-kt white gold, secured from outside by means of specially designed pillars. Transparent case back. Patented construction. Dial in 18-kt gold, hand-decorated with "peinture miniature", "gravure" and "ciselage" techniques. Scenography, depicting a typical 16th-century Italian palace with the view over Mount Vesuvius and the Bay of Naples. Five famous characters of the Commedia dell'Arte are playing music and singing during a performance. Alligator strap with 18-kt white gold folding buckle. Limited edition of 8 pieces. BGGW54GLCA/PU



MAGSONIC®

The 51 mm case with Magsonic® middle case is framed on either side by a bezel and back in 18-kt pink gold, secured from outside by means of specially designed pillars. Transparent case back. Patented construction. Skeletonized 18-kt pink gold dial. Alligator strap with 18-kt pink gold folding buckle. BGGP51GLTBGS



MAGSONIC®

This exquisite timepiece features a bezel and case back of solid gold. It is integrated with a cylindrical band made of Magsonic®, a unique low-density alloy that works with the patented construction of the case to ensure the optimal amplification of its four-hammer Westminster chime.

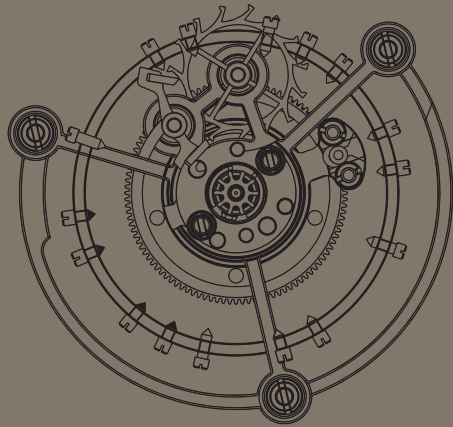
The cross-shaped push-button activates the minute repeater, and the pivoting ridged function selectors on each side select grand or small chime, chime or silent modes.



GG 31001 CALIBER

GRANDE SONNERIE TOURBILLON MOVEMENT, WESTMINSTER CHIME, GRAND AND LITTLE STRIKE ON FOUR GONGS, MINUTE REPEATER, OFF-CENTERED HOURS AND MINUTES

Mechanical manufacture movement with manual winding, entirely decorated by hand with perlage finishing and engraved wave pattern. Power reserve of 48 hours for the movement and 24 hours for the striking mechanism shown on two separate displays on the case back.

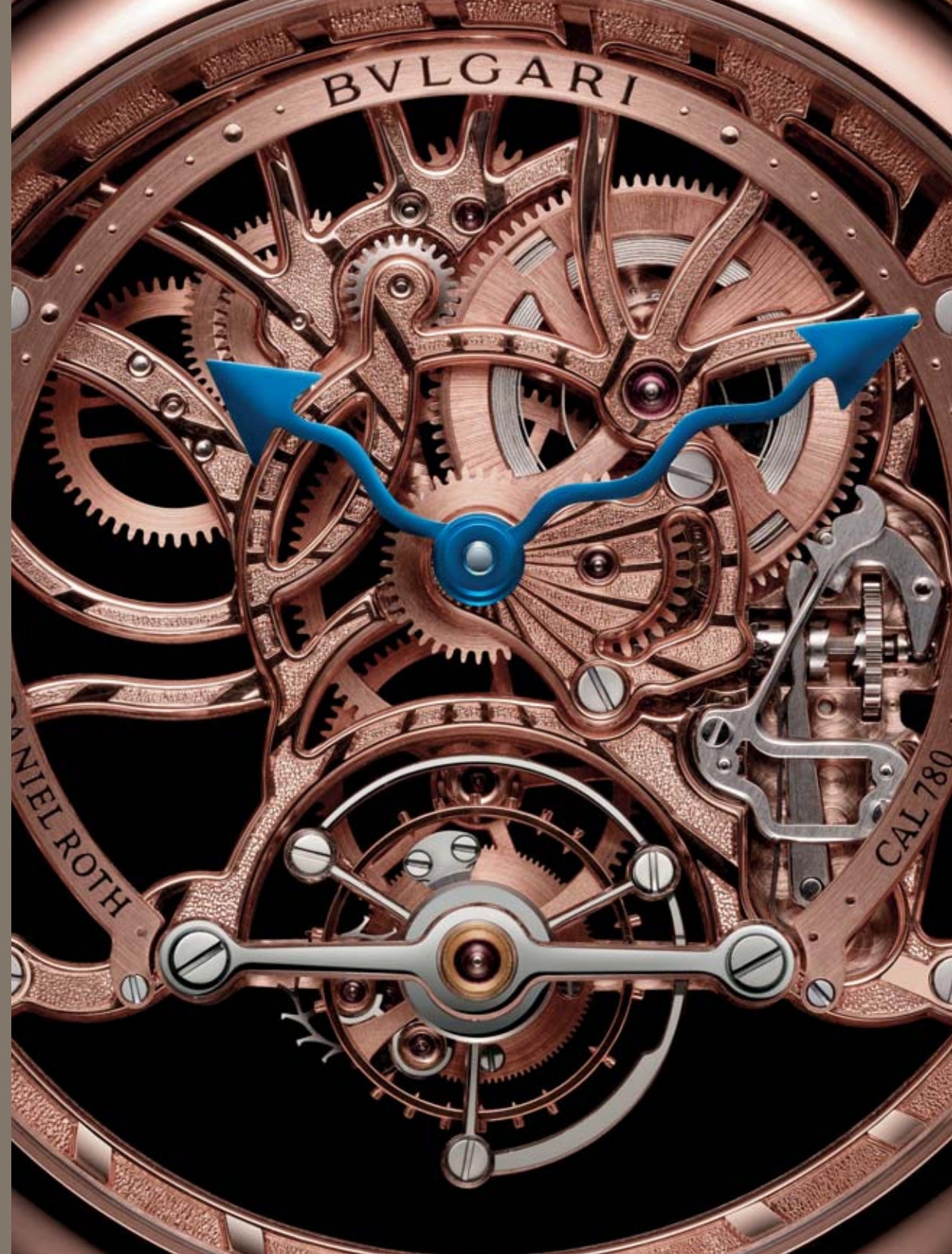


TOURBILLON

An ingenious invention from the 19th century, the tourbillon movement is still revered for its beauty and enjoyed for its practicality. Greatly improving the accuracy of mechanical watches, it was revolutionary to the world of horology – the mechanism can counter and distribute the effects of gravity that formerly hindered timekeeping.

History tells of the first tourbillon mechanism produced for Napoleon's travel carriage clock (weighing almost 90 kilos). Considered to be one of the most challenging of watch mechanisms to create, it is still valued for its engineering and design principles. Due to such complexity and its extremely small size, the ability to make a functioning tourbillon represents a pinnacle of the watchmaker's art.

BVLGARI





TOURBILLON LUMIÈRE

Just the meticulous manual decoration and finishings for the *Tourbillon Lumière* require six weeks of labor alone.

Bulgari's artisanal passion is expressed through delicate re-entrant angles and hand-hammered finishing on its pink or white-gold plate and bridges. Such exquisite craftsmanship means that no two watches will ever be the same. Just enough gleaming precious metal is left untouched to accommodate the view of the power-reserve display on the back.



DR 780 CALIBER

TOURBILLON, SKELETONISED MOVEMENT ENTIRELY DECORATED BY HAND AND POWER-RESERVE INDICATION

Mechanical manufacture movement with manual winding, openworked pink gold main plate and bridges with hand-hammering decoration and re-entrant angles. Power-reserve indication on the reverse side of the movement. Power reserve of 64 hours.



TOURBILLON LUMIÈRE

Case in 18-kt pink gold, 44 mm, set with baguette-cut diamonds. Arch dial in 18-kt pink gold graduated with dots and steel flame blued hands. Skeletonized caliber with hand-hammering decoration and re-entrant angles. Alligator strap with 18-kt pink gold ardillon buckle. BRRP44GL8DTBSK



TOURBILLON RATTRAPANTE

Case in 18-kt pink gold, 45 mm, with sapphire glass boxes on the front and the back case. Crown in 18-kt pink gold with unique number engraved. Dial with black lacquer and black galvanic finishing. Brown alligator strap with 18-kt pink gold folding buckle. Limited edition of 30 pieces. BRRP45BGLTBRA



TOURBILLON RATTRAPANTE

Offering the original and indeed rare combination of a split-second column-wheel chronograph and a tourbillon, this model pairs cutting-edge manufacturing techniques with time-tested horological tradition.

The split-second complication, called “rattrapante” in French, is a particularly sophisticated function useful for the simultaneous measurement of several short intervals.



DR 8300 CALIBER

TOURBILLON, CHRONOGRAPH WITH RATTRAPANTE, POWER-RESERVE INDICATION
Mechanical manufacture movement with manual winding. Caliber entirely decorated by hand with perlage, côtes de Genève and anglage finishing. Power reserve of 48 hours.



TOURBILLON SAPHIR

With stunning originality, this timepiece's construction uses actual sapphire crystal for the bridges and case sides. Its transparency is further enhanced by luminescence: Super-LumiNova® pigments fill special tubes crossing through the sapphire crystal case middle, and they represent the hour-marker dots on the inner bezel ring. This luminous effect is also used for the arrow tips of the skeletonized hands, increasing readability.

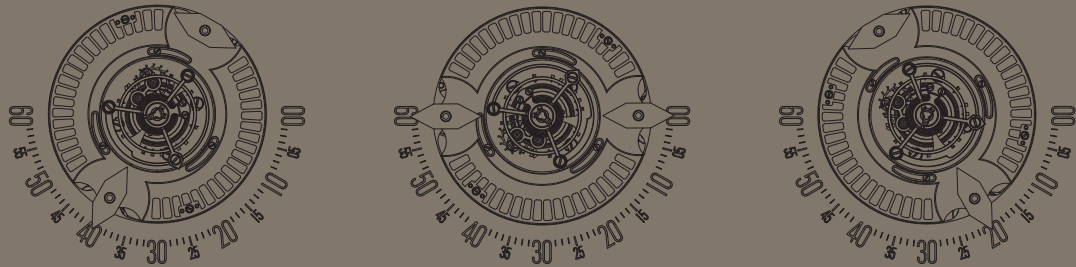


GG 8000 CALIBER
SKELETONISED TOURBILLON WITH SAPPHIRE BRIDGES
 Mechanical manufacture movement with manual winding assembled on a plate of sapphire, GG 8000 caliber decorated by hand. Power reserve of 70 hours.



TOURBILLON SAPHIR ULTRANERO

Case in titanium, 53 mm, with black Diamond Like Carbon (DLC) overall treatment. Case middle part in sapphire with cylindrical holes filled with green Super-LumiNova®. Transparent case back. Black titanium numbered crown. Skeleton sapphire dial and arrow-shaped hands with green Super-LumiNova®. Black alligator strap with titanium folding buckle. Limited edition of 30 pieces. BGG53BTLTBK/UN



PAPILLON

The “papillon” (“butterfly” in French) system refers to the uniquely beautiful minutes display of the watch’s hands.

The patented device, entirely handcrafted and developed in-house at Bulgari, is far more sophisticated than one might first perceive. Instead of a traditional retrograde minute display, the two losange-shaped hands pivot, while positioned at a 180° angle – like the wings of a butterfly, softly flitting through the air.

Circling in the same direction on a single axis, the hands take turns displaying the minutes; when they reach the 60-minute mark, they “flutter” into quickly switched positions.

BVLGARI





PAPILLON TOURBILLON

Case in 18 kt pink gold, 45 mm, with transparent case back. Crown in 18-kt pink gold, with black sapphire insert, engraved with a unique number. Black lacquered dial with opening above the tourbillon cage and papillon system. Brown alligator strap with 18-kt pink gold folding buckle. Limited edition of 30 pieces. BRRP45BGLTBAP



PAPILLON TOURBILLON

Featuring the innovation of the central flying tourbillon movement, the *Papillon Tourbillon*'s innovative construction offers an optimum view of the intricate tourbillon escapement inside.

The tourbillon was revolutionary to the world of horology in the 19th century, greatly improving the accuracy of mechanical watches. It is still considered to be one of the most challenging of mechanisms to create. Meanwhile, the poetic Papillon Minute display flutters in synchronicity with the jumping hour and demonstrates the winged beauty of Bvlgari's *savoir-faire*.



BVL 266 MANUFACTURE CALIBER WITH FLYING CENTRAL TOURBILLON AND PATENTED PAPILLON FUNCTION

Mechanical movement with manual winding, flying central tourbillon, Papillon Minute indication system and jumping hours. Caliber decorated by hand with perlage, fine sandblasting and golden engraving on its visible back-side. Power reserve of 60 hours.



PAPILLON

In a delicate pairing of watchmaking tradition and Italian Genius, the *Papillon* is a tribute to its famous namesake.

With its exclusive and patented Papillon Minute display that combines with the jumping hour, the *Papillon* demonstrates the majesty of watchmaking expertise.

Created with 100% in-house *Haute Horlogerie*, the refinement of the *Papillon* has alighted on the ultimate of horological standards.



PAPILLON BVL 252 CALIBER

JUMPING HOURS AND PATENTED CENTRAL PAPILLON MINUTE SYSTEM

Mechanical manufacture movement with automatic winding, BVL 252 caliber decorated with côtes de Genève, anglage and colimaçonée finishing. Power reserve of 42 hours.



PAPILLON

Case in 18-kt white gold, 45 mm, with transparent case back. Collector number engraved on the case back. Dark anthracite dial. Alligator strap with 18-kt white gold ardillon buckle. BRRW45BGLPAP

