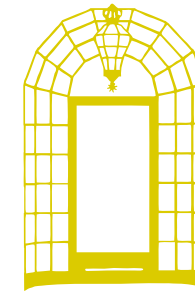




WATCHES

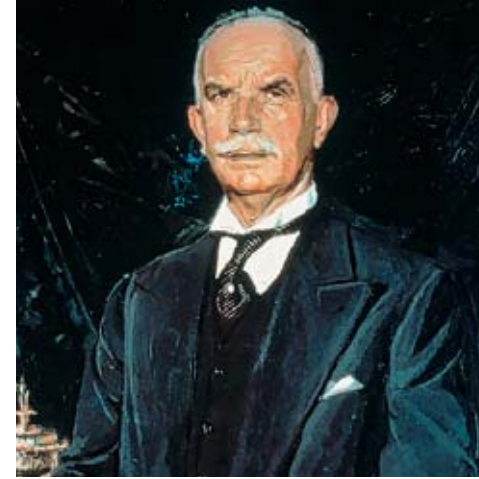
BVLGARI



2014 celebrates the 130th year of Bulgari, a name emblematic of Italian excellence. Emboldened by 2700 years of Roman history, Bulgari honours its rich past within modern designs. Known for stylistic audacity and a penchant for colour, Bulgari pieces are immediately recognisable. Designing with the sensuality of volume, a love of linearity, and a reverence for the art and architecture of Bulgari's Greek and Roman roots, these iconic features are found in each of Bulgari's creations. Harmonized with Rome's ancient history, Bulgari incorporates the city's symbolism while innovating the future of its design. With an inimitable vision of luxury, Bulgari's origins at the Via dei Condotti flagship store hosted an international elite of artists, writers and actors during the 'Dolce Vita' years – leading to Bulgari's diversified presence today. Classic yet contemporary, Bulgari upholds its 130-year legacy with a timeless sense of exquisite beauty.



The Bulgari flagship store
at Via dei Condotti 10, Rome
1934



BVLGARI HISTORY

Finding its Roman beginnings as a jewellery shop, Bulgari was founded in 1884 by Greek silversmith Sotirio Bulgari. With passionate skill and vision, he set the stage for Bulgari to become a permanent emblem of Italian excellence. For the 130 years thereafter, Bulgari's ceaseless creativity, its formidable history of innovation, and a bold, pioneering spirit led the House to become legend.

2014 marks the 130th anniversary of Bulgari, a name that has become a byword for artisanal craftsmanship, avant-garde materials and unrivalled design. The Eternal City's architectural beauty has long inspired the Italian jeweller: Bulgari reinterprets the majestic symbols of Rome with extraordinary editions of jewellery, watches, accessories and perfumes.

To esteem its ancient Roman past, BVLGARI integrated the original Latin "V" epigraphy of the family name, engraving it above its flagship store in the grand renovation of 1934. Bulgari's Roman address on the prestigious Via dei Condotti, leading up to the Spanish Steps, became both its home and source of inspiration. Rome remains the aesthetic reference for Bulgari, as it boasts a spectacular architectural backdrop.

The brand came to the attention of the world elite during the flourishing Dolce Vita years – the 1950s-60s that featured such names as Elizabeth Taylor and Audrey Hepburn engaged in passionate affairs with Bulgari jewels. Immediately recognisable for their powerful opulence, rich colours and sense of volume, Bulgari jewels soon gained renown among local bourgeois as well as the international high society set.

The Bulgari Group developed an overseas presence in the 1970s. It began as well to expand the company vision, diversifying into the world of watchmaking and launching the now-iconic “*Bulgari Bulgari*” watch in 1977. The coveted watch was just the firstborn of many, and in 1980 Bulgari founded the company Bulgari Time, in the watchmaking heart of Switzerland.

In 1993, Bulgari further diversified with the introduction of its first fragrance, *Eau Parfumée au Thé Vert*, establishing Bulgari Parfums in Switzerland. In 1996 Bulgari launched its highly successful collections of cosmopolitan accessories. In 2000, Bulgari Time’s capacities grew with the acquisition of specialised luxury watchmakers; Bulgari had now evolved into a world-class watch manufacturer. With its unmatched standard for a luxurious lifestyle, the Bulgari Group expanded its vision to hotels and resorts, featuring contemporary luxury in prestigious locations (Milan, Bali, London) via exclusive design. In 2011, Bulgari was acquired by the luxury group LVMH (Louis Vuitton Moët Hennessy), only enriching its luxury potential.

Bulgari designs are nourished by deep Roman roots, entrenched in an inspired past. Honouring history, refined Greek and Roman motifs recall the art and architecture of Bulgari’s origins. Proudly representing the exquisite nature that is Italy, the Bulgari name has become synonymous with brilliant colour, symbolic storytelling, and peerless craftsmanship – for 130 years. In all things Bulgari, luxury is its legend.



Interiors of the Bulgari flagship store
at Via dei Condotti, Rome
1934



The "Bulgari Bulgari"
Solotempo watch



ITALIAN MAGNIFICENCE

Genius and creativity, hand in hand, create what endures. From ancient Roman times to present day, Italy has enjoyed renown for a creative genius, expressing itself in every area of the human endeavour – architecture, the fine arts, science, and engineering. Over the centuries this "Italian Genius" has left us with the sculptures of Imperial Rome, the masterpieces of the Renaissance, the astronomical theories of Galileo, innovations in civil engineering, the predictions and visionary machines of Leonardo da Vinci – the finest examples of creation by a fine spirit of innovation.

This Italian Genius subtly blends a pioneering spirit, a penchant for risk, and a flair for audacity. However, insufficient in itself, one must also add an artisanal know-how and a boundless creativity – genius is born of *savoir-faire*, technology and passion. These are the values of the historic Italian figures that brought innovation to the world and forever changed our tomorrow.

Bulgari is a natural part of this heritage. Its roots are as firmly rooted in the history of Rome as they are in the Italy of today. Reinterpreting the Italian Genius in its own style, Bulgari expresses itself in countless ways, excelling in content as well as in form.

As such, Bulgari timepieces are born of Italian roots, blooming magnificent and complex from the seeds of ingenuity. When genius strikes, the chime will only resound: the initial launch of the now-iconic "Bulgari Bulgari" watch in 1977 was but the first. Following its popularity, the engraved BVLGARI BVLGARI logo was integrated as an important element of the design for the first time on



any high-end watch: this distinction became its notoriety. Likewise remarkable was the unprecedented volume of the cylindrical “*Bulgari Bulgari*” case – an apparently simple feature that is actually the result of meticulous architectural study. With such unique features, the “*Bulgari Bulgari*” watch marked the beginning of a new era of design – an era that continues to this day. Bulgari design entities continue to astound and esteem with every year – the distinctive octagonal shape of the *Octo* model, the clean contour of the *Diagono* case – beautiful, innovative timepieces that strike the inimitable signature of Bulgari. Foremost required is time and care; it takes craftsmen almost one full year to achieve the purity of form and performance that characterises every Bulgari timepiece. Whether classical, complicated or sport, every watch is a synthesis of elegance and innovation; every feature contributes to the beauty of its whole. Contemporary ergonomic design and unparalleled performance encircle a daring juxtaposition of unusual materials – ceramic, rubber – to make every creation a triumph of harmony. Making time for perfection, Bulgari timepieces define the genius of our today.



The *Octo* watch
in pink gold



THE BVLGARI ATELIER

To handcraft the watch's bridge for mechanical movement, to delicately carve the surface of a *champlevé* dial, to patiently polish the 110 facets of the *Octo* case...these are but three operations among meticulous dozens executed at Bulgari's production sites. Swiss locations in the watchmaking heart of the world have enabled Bulgari to enjoy the manufacturing capabilities necessary to construct its creations entirely in-house; this is the privilege of true players in the luxury sector. Behind every *Haute Horlogerie* masterpiece lays a vast and complex network of methodology. Technology and manual dexterity pair with passion to produce a beautiful trilogy of striking perfection.

EXCELLENCE

Bulgari Horlogerie defines excellence with every timepiece it brings to life. Like the beating of a heart, expert watchmaking is intricate and complex, and no less magical. A symphony of perfection, each of the hundreds of parts in a timepiece must operate in absolute harmony to give and preserve the life of the watch. Crafted by the specialised experts of the Bulgari Atelier, be they master watchmakers, stampers, dial-makers, precision mechanics or bevellers of handmade movements, each timepiece embodies an accord of expertise and time. The complementary combination of these operations takes several months to achieve – in the case of the Grandes Complications watches, an entire year. With painstaking attention to detail, unmatched *savoir-faire*, and a veritable passion, Bulgari craftsmen are proud to serve as the finest in the world.

Beginning as just the idea, the preliminary concept for a Bulgari watch incites a complex development of the components to comprise it. The manufacturing process begins at the heart of the watch, with the mechanical movements. Most of the hundreds of components must undergo machining, milling, electrical discharge machining, bar turning...some of these pieces are almost invisible to the human eye, yet must conform to tolerances within one thousandth of a millimetre. Many of these processes must be mechanically executed, but countless others are done by hand – such as the refinement and decoration of the individual parts. Yet still, the watch's manufacture is far from completed: the components will be meticulously adjusted before they are even assembled.

Until one day, the constructed timepiece finally comes to life. The balance wheel, the true heart of the watch, ticks its first movements, activating a system of perfectly synchronised components. The casing of the movement ensues, to protect and to beautify. Sculpted in precious metals, the case has also undergone a series of long processes in the Bulgari Atelier: from raw, precious materials to the final sculpted, sophisticated casing – creation of the case alone demands a combination of state-of-the-art skills and extreme precision. The dial, the gesture of expression, conforms to similarly detailed processes, and is of paramount importance.



The Bulgari Carillon Tourbillon



An indicator of the watch's uniqueness, Bulgari dials often have an original personality. Case in point, Bulgari has resurrected the medieval *champlevé* technique for the elaborate dial of the moon phase on the *Diagono*. *Champlevé* enamelling, or lacquering, is a delicate decorative art; one hollows out the metal, then fills it with enamel or lacquers, producing an aesthetic or functional purpose. As Bulgari is known for revering its Greek and Roman heritage, it is also known for pursuing its quest for the aesthetic via unusual techniques.

Each timepiece requires a considerable amount of time to become the animated work of art that represents Bulgari excellence. To keep time over a lifetime, there is no compromise for perfection.

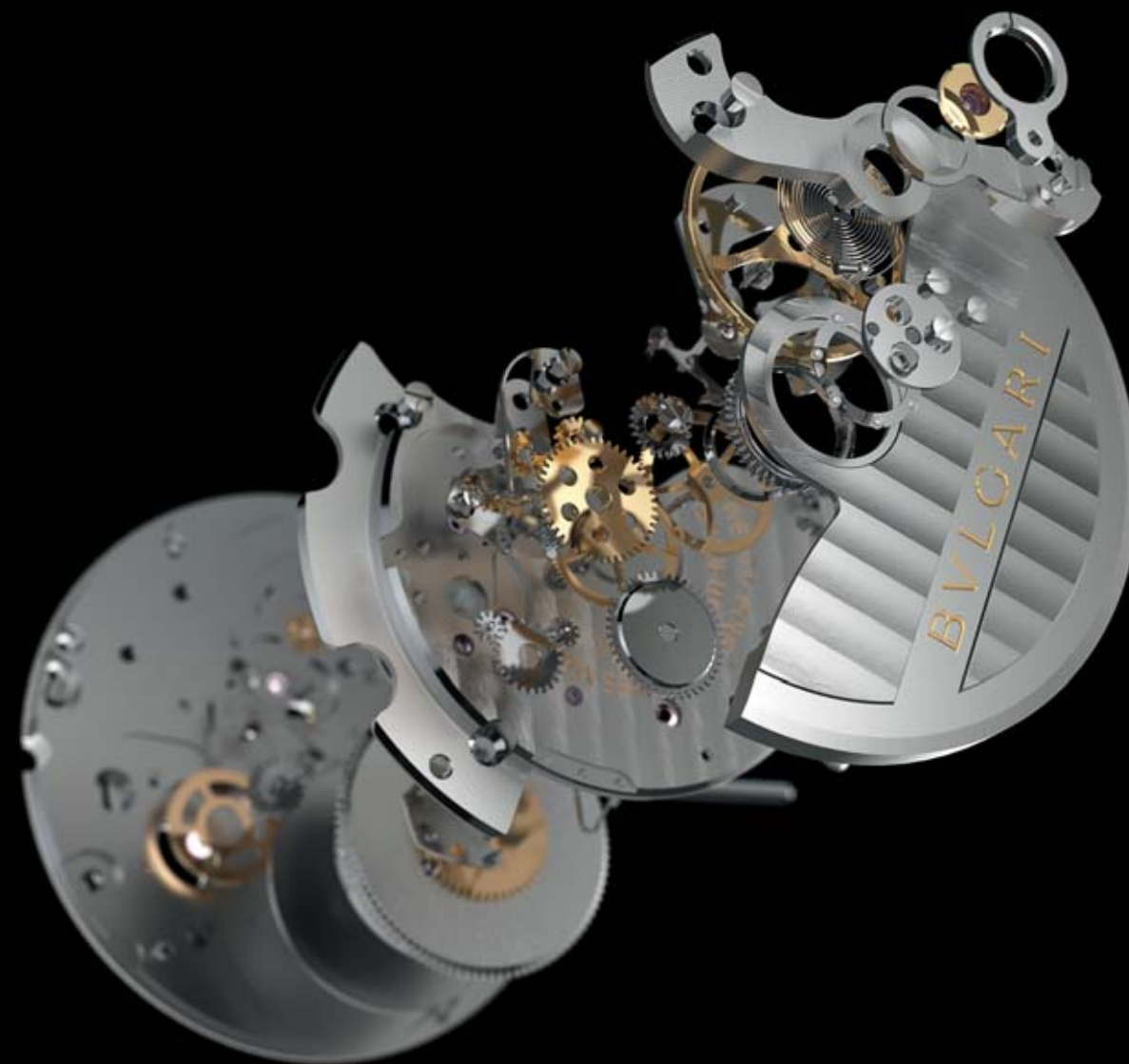


solotempo

“Simplicity is the extreme sophistication,” noted Leonardo da Vinci, the polymath genius who was also known for his painstaking attention to detail. Creating a mechanical movement requires talent and ingenuity, a reality of the watchmaking world. Paradoxically, simplicity can be the most difficult element to create well. Bulgari introduces the Solotempo caliber (BVL 191), a movement of complex simplicity.

Though the Bulgari Atelier is capable of producing some of the most complicated watches on the planet, before one can paint a masterpiece, one must know to use the brush. The *Solotempo*, Italian for “only time,” records the hour, minute, second and date, with high performance and infallible precision. With its mastery of this calibre, revered for its singular purity in timekeeping, Bulgari makes it look simple. The Solotempo caliber (BVL 191) has become synonymous with the new definition of Bulgari accuracy since 2013. Conceived, developed and manufactured completely in-house, the Solotempo caliber (BVL 191) is an example of what acute *savoir-faire* can produce, in the exquisite aesthetic of the Italian Genius.

The Solotempo caliber (BVL 191) mechanical movement is automatically wound via a ceramic ball bearing-mounted ceramic oscillating wheel weight. With an instant date changer, it also features a stop-seconds device to block the balance when the crown is pulled out. The expertly engineered calibre is equipped with a disconnecting system to avoid wear on the pinions; this saves energy when the winding system is in action via the crown or the oscillating weight. Its constituent parts – mainplate, bridges and gearing train – are produced in the Bulgari Manufacture at La Chaux-de-Fonds, Switzerland, while final assembly takes place in Le Sentier – at the Bulgari Manufacture de Haute Horlogerie. Masterminded by Bulgari’s finest industrial designers, engineers and experts, the Solotempo caliber (BVL 191) is destined to play a central role in the performances of Bulgari timepieces of the future. The model of exactitude and high performance, Solotempo caliber (BVL 191) keeps the tempo of perfect simplicity.





GRANDES COMPLICATIONS

The *calibres*, or “movements” of a mechanical watch are, in fact, an exquisite work of art. This extraordinary assembly of components – up to a thousand in the most sophisticated complications – must be fitted into a space of a few cubic centimetres. Meanwhile, the watch’s miniaturised motor must infallibly keep the precise rhythm of time. Incredibly, this timekeeper can maintain a complex chiming device, foresee a full calendar, even track the phases of the moon...yet it is most strikingly, a construction of pure elegance on the wrist.

Executing such a complex endeavour is the pride and pastime of Bulgari watchmakers. Engineers, mechanics, master watchmakers, designers, these dexterous artisans have accumulated years of experience: they are the artful masters of watchmaking *savoir-faire*.



OCTO COLLECTION

From the 15th and 16th centuries, history tells us of Italian artists such as Leonardo da Vinci, who created innovative technological designs as well as artistic masterpieces. *Octo's* design celebrates such genius, combining its trademark octagonal shape, inspired by the Roman Massentius Basilica from 310 AD, with manufacture movements crafted in Switzerland by Bulgari's master watchmakers.

Octo is a timepiece, in the shape of strength, that embodies the Bulgari man: a fortitude of personality, class and charisma, a structured interest in architectural design, and a timely devotion to the contemporary aesthetic. Breaking free of the traditional convention, the *Octo* Collection exists outside typical *Haute Horlogerie*, seamlessly forging the avant-garde. Its bold intersection of circle and square gives rise to an octagonal shape, delineating time in a complex yet perfect geometry. The eight sections of the case break classicism, but they maintain exquisitely calibrated proportions. Meanwhile, the highly structured case states its presence with clean, taut lines that convey its character and power. *Octo's* 110 separate facets are all meticulously worked by hand, with alternating polished and brushed finishes.

With singular focus, this year's *Octo Solotempo*, available with a 38 mm case, represents a pure evolution of the collection. As a model of exactitude, the 2013 invention of Solotempo caliber (BVL 191) demonstrates the seeming simplicity of keeping perfect time. Manufactured in-house, displaying hours, minutes, seconds and date, the Solotempo caliber (BVL 191) is the archetype of Bulgari's expert ability to make it all look simple.

To further the stride of the *Octo* Collection, in 2014 Bulgari developed *Octo Velocissimo*, a "speedy calibre" with a high-frequency chronograph. Housing a masterful Velocissimo caliber (BVL 328), the *Octo Velocissimo* keeps pace with a convergence of form, execution and beauty. With a heart that beats at ten vibrations per second, the soul of the movement lies in its beautiful performance. As an integrated manufacture 3-compax chronograph with date display, the Velocissimo caliber (BVL 328) is a multitasking instrument of the highest refinement.

Available in steel or pink gold, *Octo* lays claim to distinction – in the shape of absolute charisma.



OCTO SOLOTEMPO

Mechanical manufacture movement with automatic winding and instantaneous date, BVL 191 - Solotempo caliber decorated with côtes de Genève, chamfering and snailed finishing. 42 hour power reserve. 38 mm 18 kt pink gold case with transparent case back. Crown set with ceramic. Silvered dial with hand-applied indexes. Integrated alligator strap with 18 kt pink gold folding buckle. Water-resistant up to 100 metres. BGOP38WGLD

Mechanical manufacture movement with automatic winding and instantaneous date, BVL 191 - Solotempo caliber decorated with côtes de Genève, chamfering and snailed finishing. 42 hour power reserve. 38 mm steel case with 18 kt pink gold crown set with ceramic and transparent case back. Silvered dial with hand-applied indexes. Steel and 18 kt pink gold bracelet. Water-resistant up to 100 metres. BGO38WSPGD



OCTO SOLOTEMPO

Mechanical manufacture movement with automatic winding and instantaneous date, BVL 191 - Solotempo caliber decorated with côtes de Genève, chamfering and snailed finishing. 42 hour power reserve. 38 mm steel case with transparent case back. Crown set with ceramic. Lacquered polished dial with hand-applied indexes. Steel bracelet. Water-resistant up to 100 metres. BGO38BSDD

Mechanical manufacture movement with automatic winding and instantaneous date, BVL 191 - Solotempo caliber decorated with côtes de Genève, chamfering and snailed finishing. 42 hour power reserve. 38 mm steel case with transparent case back. Crown set with ceramic. Lacquered polished dial with hand-applied indexes. Integrated alligator strap with stainless steel folding buckle. Water-resistant up to 100 metres. BGO38BSLD



OCTO

Mechanical manufacture movement with automatic winding and date, BVL 193 caliber decorated with perlage, côtes de Genève and chamfering finishing. Double barrel, 50 hour power reserve. 41 mm 18 kt pink gold case with transparent case back. Crown set with ceramic. Lacquered dial with hand-applied indexes. Alligator strap with 18 kt pink gold folding buckle. Water-resistant up to 100 metres. BGOP41BGLD

Mechanical manufacture movement with automatic winding and date, BVL 193 caliber decorated with perlage, côtes de Genève and chamfering finishing. Double barrel, 50 hour power reserve. 41 mm steel case with transparent case back. 18 kt pink gold crown set with ceramic. Lacquered dial with hand-applied indexes. Integrated alligator strap with steel folding buckle. Water-resistant up to 100 metres. BGO41WSLD



OCTO VELOCISSIMO

Integrated chronograph with column wheel mechanism

Mechanical manufacture high-frequency chronograph (5Hz) with silicon escapement, automatic winding and date, BVL 328 - Velocissimo caliber decorated with perlage, côtes de Genève and chamfering finishing. 50 hour power reserve. 41 mm 18 kt pink gold case with transparent case back. Crown set with ceramic. Lacquered polished dial and hand-applied indexes. Integrated alligator strap with 18 kt pink gold folding buckle. Water-resistant up to 100 metres. BGOP41BGLDCH

Mechanical manufacture high-frequency chronograph (5Hz) with silicon escapement, automatic winding and date, BVL 328 - Velocissimo caliber decorated with perlage, côtes de Genève finishing. 50 hour power reserve. 41 mm steel case with transparent case back. Crown set with ceramic. Lacquered polished dial and hand-applied indexes. Steel bracelet. Water-resistant up to 100 metres. BGO41BSSDCH



OCTO MASERATI

The *Bulgari Octo Maserati* combines the values of emblematic excellence with two paragons of Italian style. With aesthetic refinement, performance, and a sporting spirit, the commonality between these Italian powerhouses obtains its highest expression in their partnership, culminating in a timepiece of technical sophistication. This limited edition *Bulgari Octo Maserati* revs the essence of two world-class Italian brands, and has raced to become a collector's dream.

The symbiosis of two names of mechanical excellence produces the ultimate in aesthetic refinement. Performance is key to the 2014 *Octo Maserati*: the limited edition features a Velocissimo caliber (BVL 328), 3-compax high-frequency integrated chronograph with silicon escapement, a *champlevé* dial, a tachymetric bezel and a personalised sapphire on the back sporting the Maserati logo. *Octo Maserati* has fashioned only 1914 models in total, to commemorate the year Maserati was established.

Integrated chronograph with column wheel mechanism

Mechanical manufacture high-frequency chronograph (5Hz) with silicon escapement, automatic winding and date, BVL 328 - Velocissimo caliber decorated with perlage, côtes de Genève finishing. 50 hour power reserve. 41 mm steel case with tachymetric bezel and semi-transparent case back with Maserati logo and mention "1 OUT OF 1914". Crown set with ceramic. Lacquered polished dial executed with *champlevé* technique and hand-applied indexes. Integrated alligator strap with steel folding buckle. Water-resistant up to 100 metres. Limited edition. BGO41C3SLDCH/MAS





OCTO BI-RETRO

Jumping hours, retrograde minutes (210°) and date (180°)

Mechanical manufacture movement with automatic winding, GG 7722 caliber decorated with perlage, chamfering and antique gold finishing. 45 hour power reserve. 43 mm steel case with black ceramic bezel and transparent case back. Crown set with ceramic cabochon. Lacquered dial executed with champlévé technique. Rubber strap with steel folding buckle. Water-resistant up to 100 metres. BGO43BSCVDBR

Mechanical manufacture movement with automatic winding, GG 7722 caliber decorated with perlage, chamfering and antique gold finishing. 45 hour power reserve. 43 mm 18 kt pink gold case with transparent case back. Crown set with onyx cabochon. Lacquered dial executed with champlévé technique. Alligator strap with 18 kt pink gold folding buckle. Water-resistant up to 100 metres. BGO43BGLDBR



OCTO CHRONOGRAPHE QUADRI-RETRO

Jumping hours, retrograde minutes (120°) and date (180°), integrated chronograph with column wheel and retrograde display (114°)

Mechanical manufacture chronograph with automatic winding, GG 7800 caliber decorated with perlage, chamfering and antique gold finishing. Quadri retrograde display. 38 hour power reserve. 45 mm steel case with black ceramic bezel and transparent case back. Crown set with ceramic cabochon. Lacquered dial executed with champlévé technique. Alligator strap with steel folding buckle. Water-resistant up to 100 metres. BGO45BSCLDCHQR

Mechanical manufacture chronograph with automatic winding, GG 7800 caliber decorated with perlage, chamfering and antique gold finishing. Quadri retrograde display. 38 hour power reserve. 45 mm 18 kt pink gold case with transparent case back. Crown set with onyx cabochon. Lacquered dial executed with champlévé technique. Alligator strap with 18 kt pink gold folding buckle. Water-resistant up to 100 metres. BGO45BGLDCHQR





OCTO FINISSIMO TOURBILLON
40 mm platinum case with transparent case back. Black lacquered dial. Alligator strap with platinum ardillon buckle. BGO40BPLTBT



OCTO FINISSIMO TOURBILLON

The *Octo Finissimo Tourbillon* features the world's thinnest tourbillon movement of only 1.95 mm. Bulgari has pushed the limits of engineering, reducing the tourbillon cage to fit the space of this ultra-thin movement. Special ball bearings were developed to accommodate this calibre, nine in all, which made it possible to considerably decrease the surface needed for the bridges. With a manual winding movement and the finest decorations, the *Octo Finissimo Tourbillon* is cased in precious platinum just 5.00 mm thick. As elegant and contemporary as a watch can be.



**FINISSIMO BVL 268 CALIBER
EXTRA-THIN FLYING TOURBILLON**
Mechanical manufacture movement with manual winding. Extra-thin flying tourbillon, thickness of 1.95 mm. BVL 268 caliber decorated by hand with côtes de Genève and chamfering finishing. Power reserve around 52 hours.



OCTO FINISSIMO

“Details make perfection, and perfection is not a detail,” contended da Vinci, the renowned perfectionist and master of countless disciplines. Like the inventor, engineer and artist he was, Bulgari design masters watches of unbelievable genius and sophistication. With the design of the *Octo Finissimo*, manufactured in-house, Bulgari faced one of the most extreme challenges a watchmaker can undertake, creating extremely miniaturised parts. Using the “superfine” art of *Finissimo*, Bulgari developed the micro-components for the ultimate “black tie of watches.” *Octo Finissimo*’s perfect details include manual rewinding, a 65-hour power reserve, and a back case on display, to view fine complexity in action.



FINISSIMO BVL 128 CALIBER EXTRA-THIN CALIBER WITH SMALL SECONDS AND BACK-SIDE POWER RESERVE INDICATION

Mechanical manufacture movement with manual winding, small seconds and back-side power reserve indication, thickness of 2.23 mm. BVL 128 caliber decorated by hand with côtes de Genève, chamfering and perlage finishing. Power reserve around 65 hours.



OCTO FINISSIMO

40 mm extra-thin platinum case (5.00 mm thick) with transparent case back. Crown set with ceramic. Black polished lacquered dial with raised indexes. Integrated alligator strap with platinum ardillon buckle. BGO40BPLXT



ICONIC COLLECTION

With unmistakable distinction and unparalleled craftsmanship, the Iconic Collections are unequivocally Bulgari. Such timepieces embody the Bulgari soul: founded in heritage they harness the avant-garde, defining luxury they exemplify modern Italian design. The bold creativity of Bulgari design has ever defined its distinction, and become its renown.

Pioneers of brave ideas have only their predecessors to guide them: defying convention and even the law, Italian scientist Galileo Galilei maintained that Earth revolved around the sun. Today, he is heralded as the “father of science,” a bold example of Italian ingenuity that continues in modern form. The House of Bulgari has ever followed the beat of its own drum, and is beloved for its brilliance and singular character. This renders Bulgari watches into the most luxurious keepers of all time.

Within the Iconic Collections, every detail expresses inimitable refinement. The innovative combinations of materials, the generous, balanced volumes, the mechanical expertise – Bulgari timepieces embody the strength of the family name. The “*Bulgari Bulgari*” Collection, an emblematic favourite of over three decades, is the beloved originator with an unprecedented usage of the logo as an element of design. Born as BVLGARI ROMA in 1975, the “*Bulgari Bulgari*” Collection draws its inspiration from imperial Roman coins on which the emperor’s name was engraved along the rim of the coin, leaving the centre free for his portrait – an expression of Roman splendour and symbol of wealth. The “*Bulgari Bulgari*” Collection has evolved to incorporate a sleeker design, curved case and integrated strap; the new in-house Solotempo caliber (BVL 191) and Velocissimo caliber (BVL 328) high-frequency chronograph symbolise the high-performance quintessence of the collection. Those with a “*Bulgari Bulgari*” watch become ambassadors of the Bulgari family name – invested in Bulgari tradition, in high luxury and quality, in Italian design.

Within the *Diagono* Collection, originality reigns, with a unique combination of materials, stylistic details and bold chromatic accents. *Diagono* watches define the dynamism of high-performance, as they tick to the perfection of Swiss watchmaking quality. The characteristic BVLGARI BVLGARI double logo encircles the *Diagono* watch face; its popular paternal inspiration, created in 1988, welcomes contemporary recreations of the original. Deriving from the ancient Greek word *Agôn* for “competition” – *Diagono*’s sporty style keeps time like a winner.



BVLGARI BVLGARI SOLOTEMPO

Mechanical manufacture movement with automatic winding and instantaneous date, BVL 191 - Solotempo caliber decorated with côtes de Genève, chamfering and snailed finishing. 42 hour power reserve. 39 mm 18 kt pink gold case with transparent case back. Crown set with ceramic. Lacquered polished dial with hand-applied indexes. Integrated alligator strap with 18 kt pink gold ardillon buckle. BBP39WGLD

Mechanical manufacture movement with automatic winding and instantaneous date, BVL 191 - Solotempo caliber decorated with côtes de Genève, chamfering and snailed finishing. 42 hour power reserve. 41 mm steel case with 18 kt pink gold bezel and transparent case back. 18 kt pink gold crown set with ceramic. Lacquered polished dial with hand-applied indexes. Steel and 18 kt pink gold bracelet. BB41WSPGD



BVLGARI BVLGARI SOLOTEMPO

Mechanical manufacture movement with automatic winding and instantaneous date, BVL 191 - Solotempo caliber decorated with côtes de Genève, chamfering and snailed finishing. 42 hour power reserve. 41 mm steel case with transparent case back. Crown set with ceramic. Lacquered polished dial with hand-applied indexes. Integrated alligator strap with stainless steel folding buckle. BB41BSLD

Mechanical manufacture movement with automatic winding and instantaneous date, BVL 191 - Solotempo caliber decorated with côtes de Genève, chamfering and snailed finishing. 42 hour power reserve. 41 mm steel case with transparent case back. Crown set with ceramic. Lacquered polished dial with hand-applied indexes. Steel bracelet. BB41WSSD



BVLGARI BVLGARI VELOCISSIMO

Integrated chronograph with column wheel mechanism

Mechanical manufacture high-frequency chronograph (5Hz) with silicon escapement, automatic winding and date, BVL 328 - Velocissimo caliber decorated with perlage, côtes de Genève finishing. 50 hour power reserve. 41 mm 18 kt pink gold case with transparent case back. Crown set with ceramic. Lacquered polished dial with Super-LumiNova® and hand-applied indexes. Integrated alligator strap with 18 kt pink gold ardillon buckle. BBP41BGLDCH



BVLGARI BVLGARI VELOCISSIMO

Integrated chronograph with column wheel mechanism

Mechanical manufacture high-frequency chronograph (5Hz) with silicon escapement, automatic winding and date, BVL 328 - Velocissimo caliber decorated with perlage, côtes de Genève finishing. 50 hour power reserve. 41 mm steel case with transparent case back and 18 kt pink gold bezel. Crown set with ceramic. Lacquered polished dial with Super-LumiNova® and hand-applied indexes. Steel and 18 kt pink gold bracelet. BB41BSPGDCH

Mechanical manufacture high-frequency chronograph (5Hz) with silicon escapement, automatic winding and date, BVL 328 - Velocissimo caliber decorated with perlage, côtes de Genève finishing. 50 hour power reserve. 41 mm steel case with transparent case back. Lacquered polished dial with Super-LumiNova® and hand-applied indexes. Steel bracelet. BB41BSSDCH



BVLGARI ROMA

In the 70's, a happy accident rallied a devoted clientele, as well as an expansion of the Bulgari vision. When the first 1975 BVLGARI ROMA watch was produced as a limited series of 100, intended as special gifts for Bulgari clients, it set off a wildfire of demand. Thus inspired the launch of the first and now-iconic “Bulgari Bulgari” wristwatch: the rest is watchmaking history.

In 2014, for its 130th anniversary, Bulgari introduces a tribute to its paternal originator with three limited edition watches, of only 130 pieces each. Every watch is numbered and engraved for individuality and authenticity. Each creation features artisanal finishings and a strap patined by hand, with a BVL 131M movement, manual winding, 3-days of power reserve and double barrels. This Bulgari limited edition features the BVLGARI ROMA logo encircling the bezel, coming full circle back to originality.

Mechanical manufacture movement with manual winding, BVL 131M caliber decorated with perlage, côtes de Genève and chamfering finishing. Double barrel, 72 hour power reserve. 39 mm 18 kt pink gold case with transparent case back. Lacquered polished dial with hand-applied indexes. Alligator strap with 18 kt pink gold ardillon buckle. Limited edition of 130 pieces with collector number engraved on the case side. BBP39BGL/ROMA

Mechanical manufacture movement with manual winding, BVL 131M caliber decorated with perlage, côtes de Genève and chamfering finishing. Double barrel, 72 hour power reserve. 39 mm 18 kt pink gold case with transparent case back. Lacquered polished dial with hand-applied indexes. Alligator strap with 18 kt pink gold ardillon buckle. Limited edition of 130 pieces with collector number engraved on the case side. BBP39WGL/ROMA



BVLGARI BVLGARI TOURBILLON

Visually featuring one of the most complicated *Grandes Complications* movements that a master watchmaker can create, the “*Bulgari Bulgari*” *Tourbillon* is a unique combination of high-end technical expertise and contemporary Italian design. Distinctive yet classic, the design is timeless with perfect functionality. Due to the complexity of its miniaturised mechanisms and its extremely small size, the BB Tourbillon watch is an actual marvel of watchmaking capabilities. The BB Tourbillon’s cage bridge is made of sapphire, to ensure optimal viewing of the exquisite tourbillon at work.

Tourbillon with sapphire bridge

Mechanical manufacture movement with automatic winding, BVL 263 caliber with see-through tourbillon. 64 hour power reserve. 41 mm 18 kt pink gold case with transparent case back. Alligator strap with 18 kt pink gold folding buckle. BBP41BGLTB





DIAGONO CERAMIC

Mechanical movement with automatic winding and date, B77 caliber. 42 mm steel case with black ceramic bezel. Steel and black ceramic crown. Silvered dial, hand-applied indexes with Super-LumiNova®. Rubber and steel strap with steel ardillon buckle. Water-resistant up to 100 metres. DG42C6SCVD

Mechanical movement with automatic winding and date, B77 caliber. 42 mm steel case with black ceramic bezel. Steel and black ceramic crown. Black dial, hand-applied indexes with Super-LumiNova®. Rubber and steel strap with steel ardillon buckle. Water-resistant up to 100 metres. DG42BSCVD



DIAGONO CERAMIC CHRONOGRAPHE

Mechanical chronograph with automatic winding and date, B130 caliber. 42 hour power reserve. 42 mm 18 kt pink gold case with black ceramic bezel. 18 kt pink gold and black ceramic crown and black ceramic push buttons. Black dial and hand-applied pink gold-plated indexes with Super-LumiNova®. Rubber and 18 kt pink gold strap with 18 kt pink gold ardillon buckle. Water-resistant up to 100 metres. DGP42BGCVDCH

Mechanical chronograph with automatic winding and date, B130 caliber. 42 hour power reserve. 42 mm steel case with black ceramic bezel. Steel and black ceramic crown and black ceramic push buttons. Black dial and hand-applied indexes with Super-LumiNova®. Rubber and steel strap with steel ardillon buckle. Water-resistant up to 100 metres. DG42BSCVDCH



DIAGONO ULTRANERO CHRONOGRAPHE

Mechanical chronograph with automatic winding and date, B130 caliber. 42 hour power reserve. 42 mm steel case with black Diamond Like Carbon treatment and black ceramic bezel. Steel and black ceramic crown and steel push-buttons. Black dial and hand-applied indexes with Super-LumiNova®. Rubber and steel strap with steel ardillon buckle. Water-resistant up to 100 metres. DG42BBSCVDCH

Mechanical chronograph with automatic winding and date, B130 caliber. 42 hour power reserve. 42 mm steel case with black Diamond Like Carbon treatment and 18 kt pink gold bezel. 18 kt pink gold and black ceramic crown and black ceramic push-buttons. Black dial and hand-applied pink gold plated indexes with Super-LumiNova®. Rubber and steel strap with steel ardillon buckle, both treated with Diamond Like Carbon. Water-resistant up to 100 metres. DG42BBSPGVDCH



DIAGONO ULTRANERO CHRONOGRAPHE

Mechanical chronograph with automatic winding and date, B130 caliber. 42 hour power reserve. 42 mm steel case with black Diamond Like Carbon treatment and black ceramic bezel. Steel and black ceramic crown and steel push-buttons. Black dial and hand-applied indexes with Super-LumiNova®. Red chronograph counters figures and second track. Rubber and steel strap with steel ardillon buckle. Water-resistant up to 100 metres. DG42BBSCVDCH/1

Mechanical chronograph with automatic winding and date, B130 caliber. 42 hour power reserve. 42 mm steel case with black Diamond Like Carbon treatment and black ceramic bezel. Steel and black ceramic crown and steel push-buttons. Black dial and hand-applied indexes with Super-LumiNova®. Yellow chronograph counters figures and second track. Rubber and steel strap with steel ardillon buckle. Water-resistant up to 100 metres. DG42BBSCVDCH/2



DIAGONO CALIBRO 303

The *Diagono Calibro 303* – named for the 303 exquisite parts that compose the movement – is an icon of innovative design and aesthetic beauty. With its classic double logo engraved on the bezel, the large screws cut parallel to the lugs, and the extreme legibility of the dial, the *Diagono* Collection asserts itself immediately as an aesthetic masterpiece of the watchmaker’s art. At the heart of this precise instrument lies a sophisticated activation system to engage its chronograph functions. Operated by a column wheel, a vertical pinion clutch prevents skipping, for infallible smoothness during the chronograph’s start, stop and reset operations.

Integrated chronograph with column wheel mechanism

Mechanical manufacture chronograph with automatic winding and date, BVL 303 caliber decorated with perlage, côtes de Genève and chamfering finishing. 40 hour power reserve. 42 mm steel case with 18 kt pink gold bezel and transparent case back. Multi-layer dial with gaudronné pattern, azuré counters and hand-applied indexes with Super-LumiNova®. Alligator strap with steel folding buckle. Water-resistant up to 100 metres. DG42C6SPGLDCH

Mechanical manufacture chronograph with automatic winding and date, BVL 303 caliber decorated with perlage, côtes de Genève and chamfering finishing. 40 hour power reserve. 42 mm steel case with transparent case back. Multi-layer dial with gaudronné pattern, azuré counters and hand-applied indexes with Super-LumiNova®. Steel bracelet. Water-resistant up to 100 metres. DG42BSSDCH



DIAGONO PHASES DE LUNE

With celestial elegance, the new *Diagono Moonphase* descends upon the watch aficionados of the world, and eclipses perfect beauty. A patented and original display that tracks the magnificence of the lunar cycle, as it waxes and wanes, this innovative Bulgari mechanism is completely designed and developed in-house. The dial's exquisite decoration, using the ancient *champlevé* technique, allows a carved and lacquered originality. The final hand-polish of the moons is executed with utmost expertise...leaving the *Moonphase* timepiece to glow with refinement.

Retrograde day and date (150°) with patented moonphase indication

Mechanical manufacture movement with automatic winding, BVL 347 caliber decorated with perlage, côtes de Genève and chamfering finishing. 44 hour power reserve. 42 mm 18 kt pink gold case with transparent sapphire case back. Lacquered dial executed with *champlevé* technique. Alligator strap with 18 kt pink gold folding buckle. Limited edition of 199 pieces engraved on the case side. DGP42BGLDMP/N





COMPLICATIONS

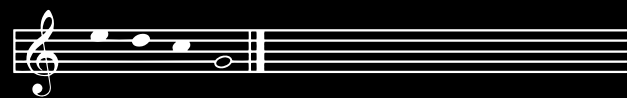
The exquisitely detailed nature of watchmaking makes veritable artists of those who have mastered it. Bulgari watchmakers partake in the rare elite who can realize the ultra-complex timepieces that now define the brand. Chiming watches, Tourbillons, Perpetual Calendars, watches that track the phases of the moon...these are among the meticulous *complications* that, once achieved, become the pride and joy of a master watchmaker. Further, Bulgari has the coveted capacity to create all watch components completely in-house: from conception and development, to production and assembly. Sporting what is probably the widest range of complication typology on the market, each Bulgari component is assembled, adjusted and decorated entirely by hand. Experienced master watchmakers dedicate approximately one year to complete a single Grandes Complications watch – the *Bulgari Grande Sonnerie Quantième Perpétuel* movement is comprised of nearly 1,000 components. As the culmination and very symbol of House expertise, the Grandes Complications watches combine Bulgari's rich history, unparalleled skill, and pioneering technology with the bold vision that has forever distinguished its name.

A most complex wristwatch complication to create is the chime. Equipped with 2, 3 or 4 hammers, the chime mechanism requires a vast amount of experience to execute: in order to obtain the right sound, pure and crystalline, the watchmaker must manually adjust the gongs over the course of several steps, filing and shortening the steel filaments to tune the perfect pitch. The 4-gong Grande Sonnerie timepieces, produced in-house at the Bulgari Haute Horlogerie workshop in Le Sentier, are able to chime the same melody as Big Ben at the Palace of Westminster. In this same vein is the *L'Amiraglio del Tempo* Minute Repeater movement, which in addition to the faculty of chiming the time on demand, contains an extraordinarily complex Détente Escapement, inspired by the Marine Chronometers timepieces.

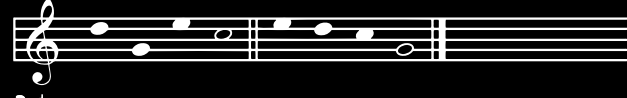
Beyond orientation and melody, some of the most elegant expressions mastered by Bulgari Horlogerie are visual. Case in point, the original *retrograde* dial: when it reaches the end of a predefined section of time, the dial jumps back to start again. Alternatively, the patented *papillon* complication is a complex mechanism capable of displaying a measure of time on one portion of the dial. Featuring two bright retractable arrows mounted on a rotating wheel, the dials resemble two butterfly wings that alternate dancing in time. Having also mastered the revered complexity of the *tourbillon* movement, a sophisticated invention that facilitates accuracy, Bulgari has proven itself the artisanal master of its craft.

CHIMING

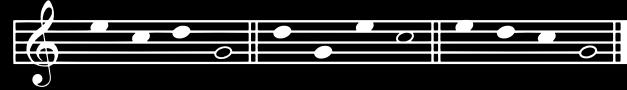
1st quarter



2nd quarter



3rd quarter



A magical construction of mechanics, technique and history, Bulgari's chiming watches strike a rare specialty, realised only by the most elite of watchmakers. Transforming the passage of time into audible sounds is highly complex art – and becomes a watchmaker's greatest achievement. Very few will ever attempt to create such a melodic masterpiece, yet Bulgari master watchmakers at the Le Sentier workshop handcraft them entirely in-house. *Carillon* watches chime two or more "gongs;" Bulgari Grande Sonnerie watches have four – able to play the Big Ben melody from the Palace of Westminster. Peerless in the horology world, Bulgari's chiming timepieces sing the praises of Bulgari *savoir-faire*.





L'AMMIRAGLIO DEL TEMPO

Inspired by the heritage of naval and chiming watches, Bulgari introduced *L'Ammiraglio del Tempo* which combines the utmost expertise in chiming watches and Haute Horlogerie. This complex new movement has become the “admiral of time” for watch aficionados. During the XVIII century, European fleets were competing for trade supremacy on the seas. Precise timekeepers called marine chronometers had been developed by the most famous watchmakers of that time in order to help sailors to precisely determine the longitudinal location of their ships. These navigation instruments used a special regulator device called a *détente*. The miniaturization of this low-frequency escapement, just 2Hz, was made possible by the addition of a constant-force mechanism. *L'Ammiraglio del Tempo* is the only wrist watch that combines two highly exclusive mechanisms: the *Détente Escapement* and *Minute Repeater*. The four gongs and hammers reproduce the famous melody of the Westminster carillon.



DR 7301 CALIBER
MINUTE REPEATER, CARILLON WESTMINSTER, 4 HAMMERS AND CATHEDRAL GONGS,
DETENTE ESCAPEMENT, CONSTANT FORCE, CYLINDRICAL BALANCE SPRING
Mechanical manufacture movement with manual winding, DR 7301 caliber, haut de gamme
finishing. 48 hour power reserve.



DANIEL ROTH L'AMMIRAGLIO DEL TEMPO

50 mm 18 kt white gold case with transparent case back. Gold dial with champlévé indexes. Minute repeater mysterious activation. Alligator strap with 18 kt white gold folding buckle. Limited edition of 10 pieces. BRRW50C3GLMRED



DANIEL ROTH CARILLON TOURBILLON

48 mm 18 kt white gold case with transparent case back. Alligator strap with 18 kt white gold folding buckle. Limited edition of 30 pieces. BRRW48GLTBMR



DANIEL ROTH CARILLON TOURBILLON

A chiming watch of the prestigious *carillon* variety must incorporate more than two hammers; the Carillon Tourbillon chimes with three. The architecture of this timepiece with its complex tourbillon movement, the delicately cut shape of the bridges, and the positioning of its 327 components strike a fine contrast to its slender beauty. The 75-hour power reserve display of the manual winding caliber is visible through the back of the case.



DR 3300 CALIBER

CARILLON THREE HAMMERS AND GONGS, MINUTE REPEATER, TOURBILLON
Mechanical manufacture movement with manual winding, DR 3300 caliber decorated by hand. Power reserve indication on the reverse side of the movement. 75 hour power reserve.



**DANIEL ROTH
GRANDE SONNERIE QUANTIEME PERPETUEL**

The movement of a Grande Sonnerie Carillon Westminster watch is already extremely complex in itself, yet this piece takes it one step further. Incorporating the entirety of its *savoir-faire*, Bulgari has incorporated a perpetual calendar and tourbillon into the timepiece, redefining the boundaries of horology. From manufacture to assembly of its 923 parts, it will take a master watchmaker over one year to complete this exceptional movement.



DR 5307 CALIBER

GRANDE SONNERIE, PERPETUAL CALENDAR, TOURBILLON MOVEMENT, WESTMINSTER CHIME, GRAND AND LITTLE STRIKE ON FOUR GONGS, MINUTE REPEATER, MOONPHASES, POWER RESERVE INDICATIONS

Mechanical manufacture movement with automatic winding, DR 5307 caliber entirely decorated by hand with côtes de Genève and chamfering finishing. Power reserve of 48 hours for the movement and 24 hours for the striking mechanism shown on 2 separate displays. Selectors on the sides of the crown for the Grand & Little and Chimes & Silence modes decorated with black sapphire discs.



DANIEL ROTH GRANDE SONNERIE QUANTIEME PERPETUEL

48 mm 18 kt pink gold case with transparent case back. Unique gold dial with multi-layer construction, lacquered finishing and sapphire discs. Alligator strap with 18 kt pink gold folding buckle. Unique piece. BRRP48GLTBGSQP/2



MAGSONIC®
 51 mm case with Magsonic® middle case framed on either side by a bezel and back in 18 kt pink gold, secured from outside by means of specially designed pillars. Transparent case back. Patented construction. Skeletonised 18 kt pink gold dial. Alligator strap with 18 kt pink gold folding buckle. BGGPS1GLTBGS



MAGSONIC®

This exquisite timepiece features a bezel and caseback of solid gold, integrated with a cylindrical band made of Magsonic. Magsonic®, a unique low density alloy, works with the patented construction of the case to ensure the optimal amplification of its four-hammer Westminster chime. The cross-shaped pushbutton activates the minute repeater, the pivoting ridged function selectors on each side select grand or small chime, chime or silent modes.



GG 31001 CALIBER
 GRANDE SONNERIE TOURBILLON MOVEMENT, WESTMINSTER CHIME, GRAND AND LITTLE STRIKE ON FOUR GONGS, MINUTE REPEATER, OFF-CENTRED HOURS AND MINUTES
 Mechanical manufacture movement with manual winding, GG 31001 caliber entirely decorated by hand with perlage finishing and engraved wave pattern. Power reserve of 48 hours for the movement and 24 hours for the striking mechanism shown on 2 separate displays on the case back.



COMMEDIA DELL'ARTE

Inspired by the lively history of Italian theatre, Bulgari created *La Commedia Dell'Arte*. This traditional comic genre used masked actors to represent various stereotypical characters. *La Commedia Dell'Arte* would perform nomadic, outdoor improvisational theatre that quickly spread across 16th-century European courts. To honour this artistic predecessor, Bulgari designed a limited edition *Commedia Dell'Arte* Collection, with each model limited to only eight pieces, creating meticulously hand-decorated dials with *peinture miniature*, *gravure* and *ciselage* techniques. Set against a typical Italian landscape such as the Bridge of Sighs in Venice, the towers of Bologna or the Bay of Naples, five famous characters perform music, sing and even move when the minute repeater is activated by the unique automaton function.



BVL 618 CALIBER

AUTOMATON WITH MINUTE REPEATER AND CATHEDRAL GONGS

Mechanical manufacture movement with manual winding, BVL 618 caliber. Automaton function with various animated parts visible on the dial, starting with the minute repeater activation. 48 hour power reserve.



COMMEDIA DELL'ARTE

54 mm 18 kt white gold with Magsonic® middle case framed on either side by a bezel and back in 18 kt white gold, secured from outside by means of specially designed pillars. Transparent case back. Patented construction. 18 kt gold dial hand-decorated with "Peinture miniature", "Gravure" and "Ciselage" techniques. Scenography, depicting a typical Italian palace from the XVI century with the view on Mount Vesuvius and the bay of Naples. 5 famous characters of the Commedia dell'Arte are playing music and singing during a performance. Alligator strap with 18 kt white gold folding buckle. Limited edition of 8 pieces. BGGW54GLCA/PU



DANIEL ROTH IL GIOCATORE VENEZIANO

46 mm 18 kt pink gold case with transparent case back. Unique hand-painted 18 kt gold dial. Alligator strap with 18 kt pink gold folding buckle. Unique piece. BRRP46GLGV/12



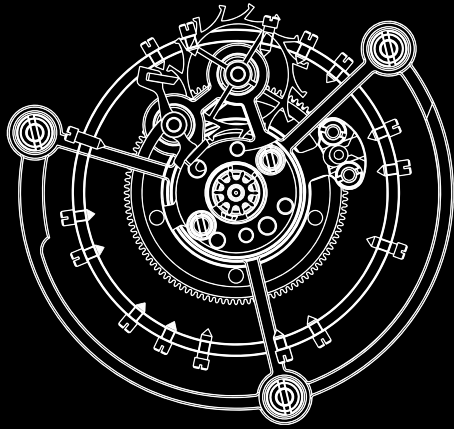
**DANIEL ROTH
IL GIOCATORE VENEZIANO**

Inspired by a 16th c. Venetian painting, the watch's manually engraved dial and hand-painted face are enlivened by a mechanical dice player, with his flickering candle that poetically changes colour. Activating the minute repeater causes the player to raise and lower his arms, alternately revealing or concealing the dice. Providing the closet gambler endearing entertainment, the player displays a new random roll of the dice with 504 combinations, a matchless and exquisite example of complicated watchmaking.



DR 7300 CALIBER
AUTOMATON WITH 504 COMBINATIONS AND MINUTE REPEATER
Mechanical manufacture movement with manual winding, DR 7300 caliber. Five different animations visible on the dial. 45 hour power reserve.

TOURBILLON



An ingenious invention from the 19th c., the *tourbillon* movement is still revered for its beauty and enjoyed for its practicality. Greatly improving the accuracy of mechanical watches, it was revolutionary to the world of horology – the mechanism can counter and distribute the effects of gravity that formerly hindered timekeeping. History tells of the first tourbillon mechanism produced for Napoleon's travel carriage clock (which weighed almost 90 kilos). Considered to be one of the most challenging of watch mechanisms to create, it is still valued for its engineering and design principles. Due to such complexity and its extremely small size, the ability to make a functioning tourbillon represents a pinnacle of the watchmaker's art.





TOURBILLON SAPHIR

With stunning originality, this timepiece's distinctive construction uses actual sapphire crystal for the bridges and case sides. Its transparency is further enhanced by luminescence: Super-LumiNova® pigments fill special tubes crossing through the sapphire crystal case middle and represent the hour-marker dots on the inner bezel ring. This luminous effect is also used for the arrow tips of the skeletonised hands, increasing readability.



GG 8000 CALIBER
SKELETONISED TOURBILLON WITH SAPPHIRE BRIDGES
 Mechanical manufacture movement with manual winding, GG 8000 caliber. 72 hour power reserve.



TOURBILLON SAPHIR

53 mm 18 kt pink gold case secured from outside by means of specially designed pillars. Middle case in sapphire crystal with columns filled with Super-LumiNova®. Transparent case back. Patented construction. Sapphire crystal dial. Alligator strap with 18 kt pink gold folding buckle. Limited edition of 25 pieces. BGGP53GLTBSK



DANIEL ROTH TOURBILLON LUMIERE

44 mm 18 kt pink gold case with transparent case back. Manufacture caliber with hand-hammering decoration. Alligator strap with ardillon buckle. BRRP44GLTBSK



**DANIEL ROTH
TOURBILLON LUMIERE**

The painstaking manual decoration and finishing for the *Tourbillon Lumière* requires six weeks of meticulous labour alone. Bulgari's artisanal passion is expressed through delicate re-entrant angles and hand-hammered finishing on its pink gold plate and bridges. Such exquisite craftsmanship means that no two watches will ever be the same. Just enough gleaming precious metal is left alone to accommodate a view of the power reserve display on the back.



DR 780 CALIBER
TOURBILLON, SKELETONISED MOVEMENT ENTIRELY DECORATED BY HAND AND
POWER RESERVE INDICATION
Mechanical manufacture movement with manual winding, DR 780 caliber, openworked
pink gold main plate and bridges with hand-hammering decoration and re-entrant angles.
Power reserve indication on the reverse side of the movement. 64 hour power reserve.



**DANIEL ROTH
TOURBILLON RATRAPANTE**

Offering the original and indeed rare combination of a split-second column-wheel chronograph and a tourbillon, this model pairs cutting-edge manufacturing techniques with time-tested horological tradition. The split-second complication, called *rattrapante* in French, is a particularly sophisticated function, useful for the simultaneous measurement of several short intervals.



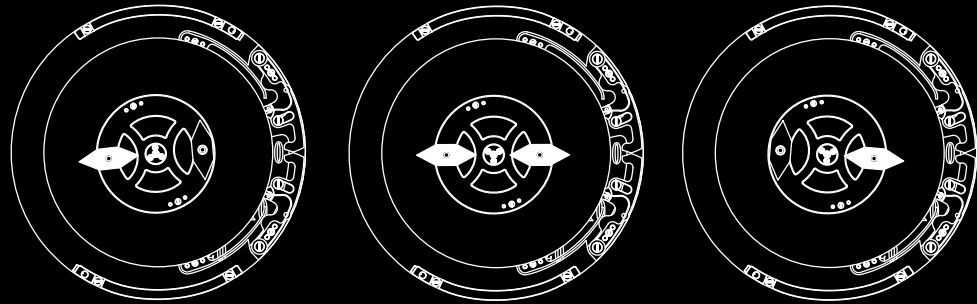
DR 8300 CALIBER
TOURBILLON, CHRONOGRAPH WITH RATRAPANTE, POWER RESERVE INDICATION
Mechanical manufacture movement with manual winding, DR 8300 caliber entirely decorated by hand with perlage, côtes de Genève and chamfering finishing. 48 hour power reserve.



DANIEL ROTH TOURBILLON RATRAPANTE

46 mm 18 kt pink gold case with transparent case back. Multi-layer lacquered dial with satinés treatments and power reserve indication. Alligator strap with 18 kt pink gold folding buckle. BRRP46C14GLTBRA

PAPILLON



The *papillon* (“butterfly” in French) system refers to the uniquely beautiful minutes display of the watch hands. The patented device, entirely handcrafted and developed in-house at Bulgari, is far more sophisticated than one might first perceive. Instead of a traditional retrograde minute display, the two wing-shaped hands pivot, while positioned at a 180° angle – like planets orbiting the sun. Circling in the same direction on a single axis, the hands take turns displaying the minutes – when they reach the 60-minute mark, they “flutter” into quickly switched positions.





DANIEL ROTH PAPILLON VOYAGEUR

46 mm 18 kt pink gold case with transparent case back. 2 layer dial with vertical brushed black gold and white lacquer. Alligator strap with 18 kt pink gold folding buckle. Limited edition of 99 pieces with collector number engraved on the back case. BRRP46C14GLGMTP



DANIEL ROTH PAPILLON VOYAGEUR

Skipping between continents, juggling time differences, today's jet-set needs speed and mobility on its side with such a perpetually shifting perception of time. The new *Bulgari Papillon Voyageur* provides an original point of reference for globetrotters, combining an exclusive *Haute Horlogerie* creation with an instrument to find their temporal bearings, anywhere on the planet.



DR 1307 CALIBER

JUMPING HOURS, PAPILLON MINUTE SYSTEM AND CENTRAL GMT DISPLAY

Mechanical manufacture movement with automatic winding, DR 1307 caliber decorated with perlage, côtes de Genève and chamfering finishing. Jumping hours, patented double-hand papillon minute system, central second time zone. 45 hour power reserve.



DANIEL ROTH GRANDE LUNE

This creation follows the movements in the sky in their most majestic form, tracking the phases of the moon. Positioned in the celestial vault at the centre of the dial, the moon, coated with finest gold, appears through an asymmetrical opening partly concealed by the circular seconds counter. This latter display consists of a dial with three linked hands, each of differing lengths, turning on a single axis to respectively cover three 20-second segments.



DR 2300 CALIBER
ASTRONOMICAL MOONPHASE, THREE ARMS SMALL SECOND HAND AND DATE
Mechanical manufacture movement with manual winding and date, DR 2300 caliber decorated with perlage, côtes de Genève and chamfering finishing. Central moonphase display. 40 hour power reserve.



DANIEL ROTH GRANDE LUNE

46 mm 18 kt pink gold case with transparent case back. 2 layer dial with vertical brushed black gold and white lacquer. Hand-applied indexes. Alligator strap with 18 kt pink gold ardillon buckle. BRRP46C14GLDMP



DANIEL ROTH PETITE SECONDE

44 mm 18 kt pink gold case with transparent case back. 2 layer dial with vertical brushed black gold and white lacquer. Hand-applied indexes. Alligator strap with 18 kt pink gold ardillon buckle. BRRP44C14GLPS



**DANIEL ROTH
PETITE SECONDE**

This emblematic model is equipped with an extra-thin mechanical movement of the *Lépine* type, decorated in keeping with the pillars of the *Haute Horlogerie* tradition. The signature double ellipse case of this Daniel Roth creation measures 7 millimetres high and is made in accordance with the highest horological standards; a subtle union of watchmaking tradition and Latin elegance.



DR 206 CALIBER
THREE ARMS SMALL SECOND HAND
Mechanical manufacture movement with manual winding, DR 206 caliber decorated with perlage, côtes de Genève and chamfering finishing. 43 hour power reserve.



Eight bracelet-watches
of the 1970s, variations
of the snake bracelet motif



HISTORY OF LADIES' WATCHES

Bulgari ladies' watches are wound in a history that ticks with elegant grace. In the 1920s, the watches exquisitely combined Art Deco trends with Bulgari's initial custom-made pieces. In the 1940s, wristwatches assumed the form of the sinuous snake, in a reinterpretation of jewellery traditions dating to Hellenistic and Roman times. Born of a legendary symbol, the first *Serpenti* models featured a flexible body of gleaming yellow gold, head and tail set with brilliant diamonds. The precious snakes to follow featured scales of gemstones or polychrome enamel, others were coiled with the supple *Tubogas* technique, a Bulgari hallmark. The firstborn *Serpenti* encouraged more renditions of the original; the collection has grown to become a Bulgari icon today.

Colour is often one of the most recognisable features of a Bulgari creation, evident in the sparkling eyes of *Serpenti* or the splashes of bracelet-colour on red-carpet celebrities. Bulgari is the undisputed master of coloured gemstones – esteemed artisans of quality, cut and gemstone design – and was one of the first Houses to ever use colour in high jewellery design. Beyond its vast experience, Bulgari is known for its innovation with colour, employing gemstones and unusual materials that have literally never been seen before. Developing this bold and unprecedented style, Bulgari has explored uncommon colour combinations of semi-precious and precious stones, and invented the gemstone rainbow.



The rainbow shines colourful across all Bulgari collections, but perhaps most charmingly, within *Serpenti*. In the 1960s, the revered glamour of the collection won the heart of illustrious Elizabeth Taylor, who became a passionate and lifelong collector of Bulgari. Indeed, she was famously photographed on the set of 'Cleopatra' wearing a prestigious *Serpenti* timepiece. Bulgari's 80's watches began including precious bracelets to seductively coil the wrist. The millennium launched another icon of modern Bulgari design, the B.zero1 jewellery and watches collection that evolves every year with unusual, playful materials, such as marble and ceramic. In 2006, Bulgari launched *Astrale*, a celestially jewelled timepiece studded with diamonds and coloured stones. 2013 picked the *Berries* Collection, an opulent timepiece that combines Bulgari's *savoir-faire* in high jewellery and *Haute Horlogerie*. Furthering this jewelled inspiration, Bulgari's *Catene* watch is a linked bracelet-watch in precious pink gold, sentimentally reminiscent of the classic nameplate bracelet. 2014 casts a new light on Bulgari's jewellery-watchmaking with *LVCEA*, gleaming with diamond-stud hours and a cabochon-gem crown. And of course, the "*Bulgari Bulgari*" and *Diagono* collections for men pair with ever-evolving versions for women, keeping time with feminine grace.





COLOUR OF TIME

Legends are born to live forever – as stories retold, relics passed on. The brilliant creations of the Bulgari jewellery-watches collection enjoy this eternal beauty, as they burst with colour, creativity and myth. Each jewellery timepiece has its own story to tell, exquisitely recounted on a woman's wrist.

Combining Bulgari's jeweller experience with its watchmaking expertise creates twice the masterpiece – in one watch collection. Engaging these talents to narrate each story behind its jewellery-watch creations, Bulgari's *Diva* Collection is inspired by the tale of ancient Roman mosaics. Creating a collection to esteem the elaborate mosaics dating to 216 AD, their patterns intricately line the surfaces of beautiful baths built under the reign of Roman Emperor Caracalla. Quintessentially feminine and delicate, Bulgari's *Diva* design embodies the daring and colourful style which has also captivated Hollywood stars such as Elizabeth Taylor. In further tribute to the ancient architecture of its Greek and Roman heritage, Bulgari designed the *MVSA* Collection, using uncommon gemstones in exceptional shapes and volumes that resound as columns, domes or light – for a magnificent play of contours. The jewellery-watch Bulgari collections sparkle in a brilliant tradition that includes *Astrale* – the celestially jewelled timepiece studded with diamonds and coloured stones, or *Berries* – the colourful timepiece that combines Bulgari's *savoir-faire* in high jewellery and *Haute Horlogerie*. Within each piece of the jewellery-watch collection, the story of charisma is a beautiful novel, expressed with vivid colour, enthusiastic volume and resounding passion.





DIVA

Quartz movement. 39 mm 18 kt pink gold case set with amethysts, rubellite and peridots beads and brilliant-cut diamonds. White mother-of-pearl dial. Satin strap with 18 kt pink gold folding clasp set with brilliant-cut diamonds. DVP39WGD1ARPL

Quartz movement. 39 mm 18 kt pink gold case set with brilliant-cut diamonds, round-cut diamonds, round-cut rubellite and mother-of-pearl. White mother-of-pearl dial. Satin strap with 18 kt pink gold folding clasp set with brilliant-cut diamonds. DVP39WGD1MOPRL

Next page: Quartz movement. 39 mm 18 kt pink gold case set with turquoises, brilliant-cut diamonds, round-cut diamonds and pink tourmaline. Dial with snow-set diamond pavé. 18 kt pink gold bracelet set with turquoises and brilliant-cut diamonds. DVP39D2GD2GD1TUT





MVSA

Quartz movement. 37 mm 18 kt white gold case set with brilliant-cut diamonds and buff-cut amethysts and sapphires. Dial with snow-set diamond pavé. 18 kt white gold links set with brilliant-cut diamonds, buff-cut sapphires and cabochon-cut amethysts. Strap with 18 kt white gold ardillon buckle set with brilliant-cut diamonds. MUW37D2GD1ASL

Quartz movement. 37 mm 18 kt pink gold case set with brilliant-cut diamonds, buff-cut amethysts and fancy-cut turquoises. White mother-of-pearl dial. 18 kt pink gold links set with brilliant-cut diamonds, turquoise elements and cabochon-cut amethysts. Strap with 18 kt pink gold ardillon buckle set with brilliant-cut diamonds. MUP37WGD1ATL

GEMMA

Previous page: Quartz movement. 30 mm 18 kt pink gold case set with buff-cut tourmalines, brilliant-cut diamonds and white mother-of-pearl elements. White mother-of-pearl dial. 18 kt pink gold bracelet set with tourmalines, amethysts and rubellites beads, brilliant and round-cut diamonds and white mother-of-pearl elements. GEP30WGD1TARDI



ASTRALE

Quartz movement. 36 mm 18 kt white gold curved case set with brilliant-cut diamonds and fancy-cut coloured gemstones. White mother-of-pearl dial. Satin strap with 18 kt white gold folding clasp. AEW36D2CWL

Quartz movement. 36 mm 18 kt pink gold curved case set with brilliant-cut diamonds and fancy-cut coloured gemstones. White mother-of-pearl dial. Satin strap with 18 kt pink gold folding clasp. AEP36D2CWL

Next page: Quartz movement. 36 mm 18 kt yellow gold curved case set with brilliant-cut diamonds and fancy-cut coloured gemstones. Black dial. Satin strap with 18 kt yellow gold folding clasp. AE36D2CBL





BERRIES

Previous page: Tourbillon with sapphire bridge and retrograde hours (240°)

Mechanical manufacture movement with automatic winding, BVL 313 caliber, oscillating mass set with brilliant-cut diamonds. 40 mm 18 kt white gold case set with brilliant-cut diamonds and emeralds. White mother-of-pearl with serigraphy dial. Alligator strap with 18 kt white gold folding clasp set with brilliant-cut diamonds. BEW40WGD2LETB

Jumping hour and retrograde minutes (180°)

Mechanical manufacture movement with automatic winding. 40 mm 18 kt pink gold case set with brilliant-cut diamonds, sapphires, emeralds, rubies, and coloured gemstones. White mother-of-pearl dial marquetry set with diamond indexes. Satin strap with 18 kt pink gold folding clasp set with brilliant-cut diamonds. BEP40WGD2LR

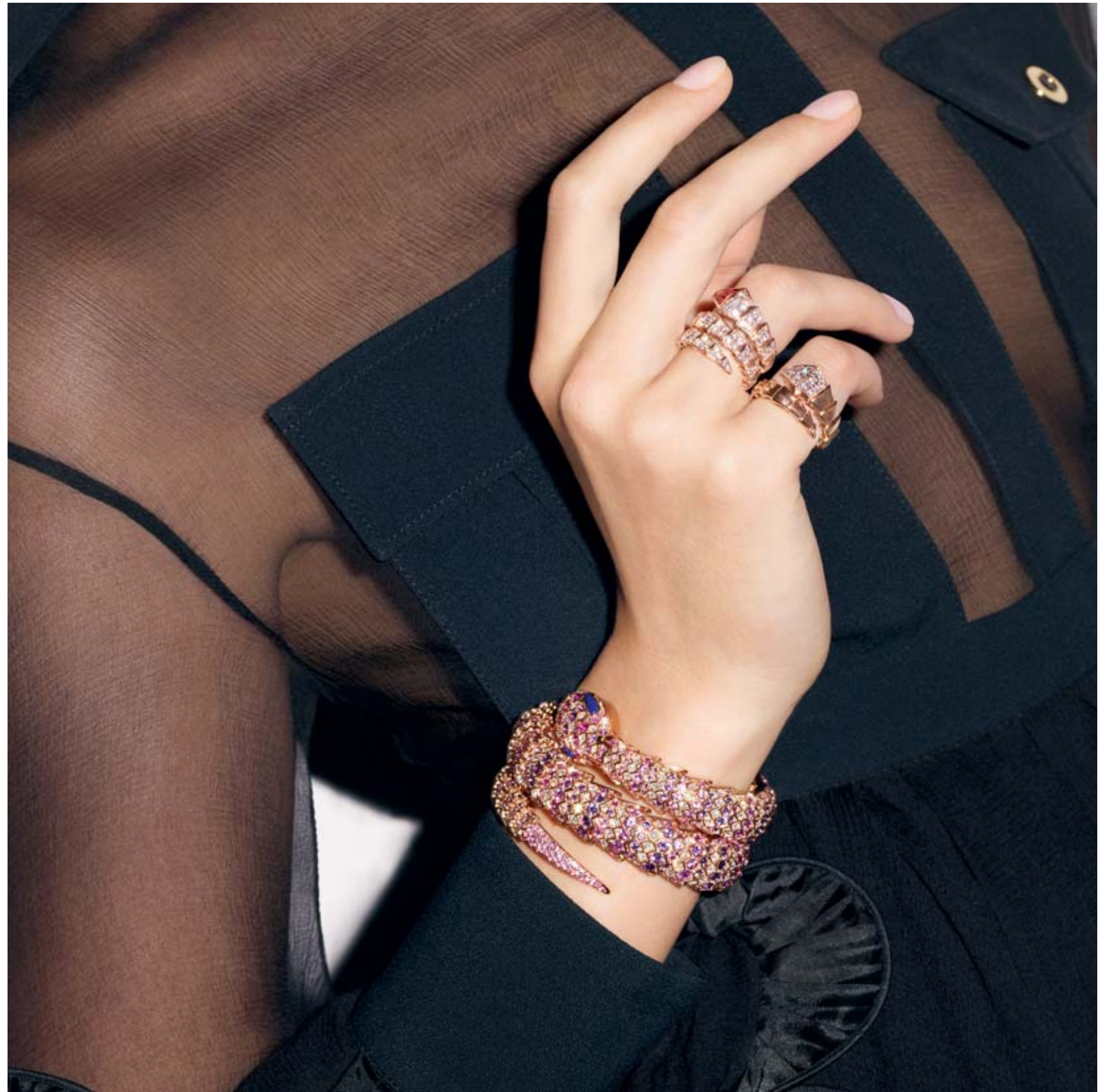
Tourbillon with sapphire bridge and retrograde hours (240°)

Mechanical manufacture movement with automatic winding, BVL 313 caliber, oscillating mass set with brilliant-cut diamonds. 40 mm 18 kt white gold case set with brilliant-cut diamonds and rubies. White mother-of-pearl with serigraphy dial. Alligator strap with 18 kt white gold folding clasp set with brilliant-cut diamonds. BEW40WGD2LRTB

SERPENTI COLLECTION

Bulgari and women, a longstanding romance, begun at the foundation of the House. Their exquisite affair, as passionate today as it was 130 years ago, has produced breath-taking creations and lifetime obsessions. Perhaps most exotically, Bulgari has entwined itself with women in the *Serpenti* Collection. Whether interpreted in a realistic or geometrically abstract manner, the serpent encircles the most iconic Bulgari hallmarks together: a love for colour, the juxtaposition of materials, a supple wearability, and innovative artisanal techniques.

Coiled deeply around the history of humanity, the serpent is a seductive symbol dating back to ancient Greek and Roman mythology. Representing wisdom, vitality, and the circle of life, the serpent has transcended centuries, traditions and cultures to become the emblem of beauty and strength. Adorning Aphrodite, the goddess of love, held by Asclepius, the Greek god of medicine, the snake's power is undeniably linked with humanity. History of civilization is intertwined with this emblem – even Queen Victoria was seduced in the 19th c., preferring a serpent-shaped engagement ring. Perhaps no leader of the world is more closely associated with serpents than Cleopatra, whose royal décor and divine powers revered the sinuous snake. The motif reigns equally as mythical in current day, evident in a jewelled serpentine history, ensnared by the Bulgari's *Serpenti*.







SERPENTI HIGH JEWELLERY

Previous page: Quartz movement. 40 mm 18 kt pink gold case. Dial and double-spiral bracelet set with brilliant-cut diamonds and corals. Eyes in corals. SPP40D2GD2C.2T

Quartz movement. 40 mm 18 kt white gold case. Dial and double-spiral bracelet set with brilliant-cut diamonds and emeralds. Eyes in malachites. SPW40D2GD2E.2T



SERPENTI HIGH JEWELLERY

Quartz movement. 40 mm 18 kt white gold curved case and dial set with brilliant-cut diamonds, marquise-cut diamonds. 18 kt yellow gold bracelet set with brilliant-cut diamonds. Eyes in rubies. SP40D1WGD2RYGD1



SERPENTI

Quartz movement. 26 mm 18 kt pink gold curved case set with brilliant-cut diamonds. Black sapphire crystal dial set with diamond indexes. Single-spiral 18 kt pink gold bracelet set with brilliant-cut diamonds and black onyx. SPP26BGD1GD1O.1T

Quartz movement. 26 mm 18 kt white gold curved case set with brilliant-cut diamonds. White mother-of-pearl dial set with diamond indexes. Double-spiral 18 kt white gold bracelet set with brilliant-cut diamonds. SPW26WGD1GD2.2T



SERPENTI

Quartz movement. 26 mm 18 kt pink gold curved case set with brilliant-cut diamonds. White mother-of-pearl dial set with diamond indexes. Single-spiral 18 kt pink gold bracelet set with brilliant-cut diamonds and white mother-of-pearl. SPP26WGD1GD1W.1T

Quartz movement. 26 mm 18 kt white gold curved case set with brilliant-cut diamonds. Black sapphire crystal dial set with diamond indexes. Double-spiral 18 kt white gold bracelet set with brilliant-cut diamonds and black onyx. SPW26BGD1GD1O.2T

Stretching to the full expression of Bulgari charisma, *Serpenti* watches demonstrate the power, elegance and refinement of the Bulgari snake. Often coiled with another singular hallmark specific to Bulgari, the lithe bodies of *Serpenti* pair naturally with the supple *Tubogas* technique. *Serpenti* watches created of the *Tubogas* technique capture the distinctive allure of the Bulgari woman in their coil: the embrace of confidence, the gaze of magnetism.







SERPENTI

Previous page: Quartz movement. 35 mm 18 kt pink gold curved case set with brilliant-cut diamonds. 18 kt pink gold crown set with a cabochon-cut pink rubellite. Black opaline dial with guilloché soleil treatment and hand-applied indexes. Double-spiral 18 kt pink gold bracelet. SPP35BGDG.2T

Quartz movement. 35 mm 18 kt pink gold curved case set with brilliant-cut diamonds. 18 kt pink gold crown set with a cabochon-cut pink rubellite. 18 kt pink gold dial set with full pavé brilliant-cut diamonds and hand-applied indexes. Double-spiral 18 kt pink gold bracelet. SPP35D2GDG.2T

Quartz movement. 35 mm 18 kt pink gold curved case set with brilliant-cut diamonds. 18 kt pink gold crown set with a cabochon-cut pink rubellite. Black opaline dial with guilloché soleil treatment and hand-applied indexes. Single-spiral 18 kt pink gold bracelet. SPP35BGDG.1T



SERPENTI

Quartz movement. 35 mm 18 kt yellow gold curved case set with brilliant-cut diamonds. 18 kt yellow gold crown set with a cabochon-cut pink rubellite. Silver opaline dial with guilloché soleil treatment and hand-applied indexes. Double-spiral 18 kt yellow gold bracelet. SP35C6GDG.2T



SERPENTI

Quartz movement. 35 mm steel curved case with 18 kt pink gold bezel. 18 kt pink gold crown set with a cabochon-cut pink rubellite. Silver opaline dial with guilloché soleil treatment and hand-applied indexes. Double-spiral 18 kt pink gold and steel bracelet. SP35C6SPG.2T

Quartz movement. 35 mm steel curved case with 18 kt pink gold bezel set with brilliant-cut diamonds. 18 kt pink gold crown set with a cabochon-cut pink rubellite. Black opaline dial with guilloché soleil treatment and hand-applied indexes. Single-spiral 18 kt pink gold and steel bracelet. SP35BSPGD.IT



SERPENTI

Quartz movement. 35 mm steel curved case set with brilliant-cut diamonds. Steel crown set with a cabochon-cut pink rubellite. Silver opaline dial with guilloché soleil treatment and hand-applied indexes. Double-spiral steel bracelet. SP35C6SDS.2T

Quartz movement. 35 mm steel curved case. Steel crown set with a cabochon-cut pink rubellite. Silver opaline dial with guilloché soleil treatment and hand-applied indexes. Single-spiral steel bracelet. SP35C6SS.IT



SERPENTI

Previous page: Quartz movement. 35 mm 18 kt pink gold curved case set with brilliant-cut diamonds. 18 kt pink gold crown set with a cabochon-cut pink rubellite. Black lacquered dial and hand-applied indexes. Double-spiral 18 kt pink gold and black ceramic bracelet set with brilliant-cut diamonds. SPP35BGDBCUDI.2T

Quartz movement. 35 mm 18 kt pink gold curved case set with brilliant-cut diamonds. 18 kt pink gold crown set with a cabochon-cut pink rubellite. White lacquered dial and hand-applied indexes. Single-spiral 18 kt pink gold and white ceramic bracelet set with brilliant-cut diamonds. SPP35WGDWCGDI.1T

Quartz movement. 35 mm steel curved case set with brilliant-cut diamonds. Steel crown set with a cabochon-cut pink rubellite. Black lacquered dial and hand-applied indexes. Single-spiral steel and black ceramic bracelet set with brilliant-cut diamonds. SP35BSDBCSDI.1T

LVCEA

Enlightening time, Bulgari creates LVCEA. Capturing the radiance of gemstones, Bulgari clasps colour to precision, and sensuality to strength.

As the unequivocal master of coloured stones, Bulgari designs with the gemstone rainbow. Among the first to ever use colour in high jewellery design, colour is today one of the most iconic features of Bulgari creations. In the LVCEA Collection, colour winks from the crown, set as a noble pink cabochon-cut stone with a brilliant-cut diamond twinkling atop it.

Born of Rome, Bulgari is known to produce creations inspired by the Eternal City, since 1884. Revering its heritage, LVCEA's modern architecture echoes of the ancient, and recalls the sundial. Solar quadrants, unearthed in Ancient Rome, formed mankind's most primordial form of timekeeping – the sundial was the predecessor to today's precision. As such, selected LVCEA creations mark time with “sundial” Roman numerals, others with diamonds set by the renowned jeweller.

A timepiece named for lucent elegance, LVCEA glimmers with the eternity of sunlight. Strength spirals to sensuality, as the geometrical links of the bracelet coil into the rounded heart of the case. LVCEA beauty gauges the gleaming hours of the sun; LVCEA encompasses the aura of a woman. With a round case, a lithe foundation and a range of shades and styles, Bulgari's LVCEA is as luminously feminine as it is unmistakable.





LVCEA

Mechanical movement with automatic winding. 33 mm 18 kt pink gold case set with brilliant-cut diamonds. 18 kt pink gold crown set with a pink cabochon-cut stone and diamond. Black opaline dial with a guilloché soleil treatment set with diamond indexes. 18 kt pink gold bracelet set with brilliant-cut diamonds. LUP33BGDGD1D/11





LVCEA

Mechanical movement with automatic winding. 33 mm 18 kt pink gold case set with brilliant-cut diamonds. 18 kt pink gold crown set with a pink cabochon-cut stone and diamond. Black opaline dial with a guilloché soleil treatment and gold plated index and Roman numerals 12 and 6. 18 kt pink gold bracelet. LUP33BGDGD

Mechanical movement with automatic winding. 33 mm 18 kt pink gold case. 18 kt pink gold crown set with a pink cabochon-cut stone and diamond. White mother-of-pearl dial set with diamond indexes. 18 kt pink gold bracelet. LUP33WGGD/11



LVCEA

Mechanical movement with automatic winding. 33 mm steel case. 18 kt pink gold crown set with a pink cabochon-cut stone and diamond. Silver opaline dial with a guilloché soleil treatment and gold plated index and Roman numerals 12 and 6. Steel and 18 kt pink gold bracelet. LU33C6SSPGD

Mechanical movement with automatic winding. 33 mm steel case with 18 kt pink gold bezel. 18 kt pink gold crown set with a pink cabochon-cut stone and diamond. Black opaline dial with a guilloché soleil treatment and gold plated index and Roman numerals 12 and 6. Steel and 18 kt pink gold bracelet. LU33BSPGSPGD



LVCEA

Previous page: Quartz movement. 28 mm steel case with 18 kt pink gold bezel. 18 kt pink gold crown set with a pink cabochon-cut stone and diamond. White mother-of-pearl dial set with diamond indexes. Steel and 18 kt pink gold bracelet. LU28WSPGSPG/12

Quartz movement. 28 mm steel case. Steel crown set with a pink cabochon-cut stone and diamond. Silver opaline dial with a guilloché soleil treatment and rhodium plated index and Roman numerals 12 and 6. Steel bracelet. LU28C6SSD

Mechanical movement with automatic winding. 33 mm steel case. Steel crown set with a pink cabochon-cut stone and diamond. White mother-of-pearl dial set with diamond indexes. Steel bracelet. LU33WSSD/11

BVLGARI BVLGARI COLLECTION

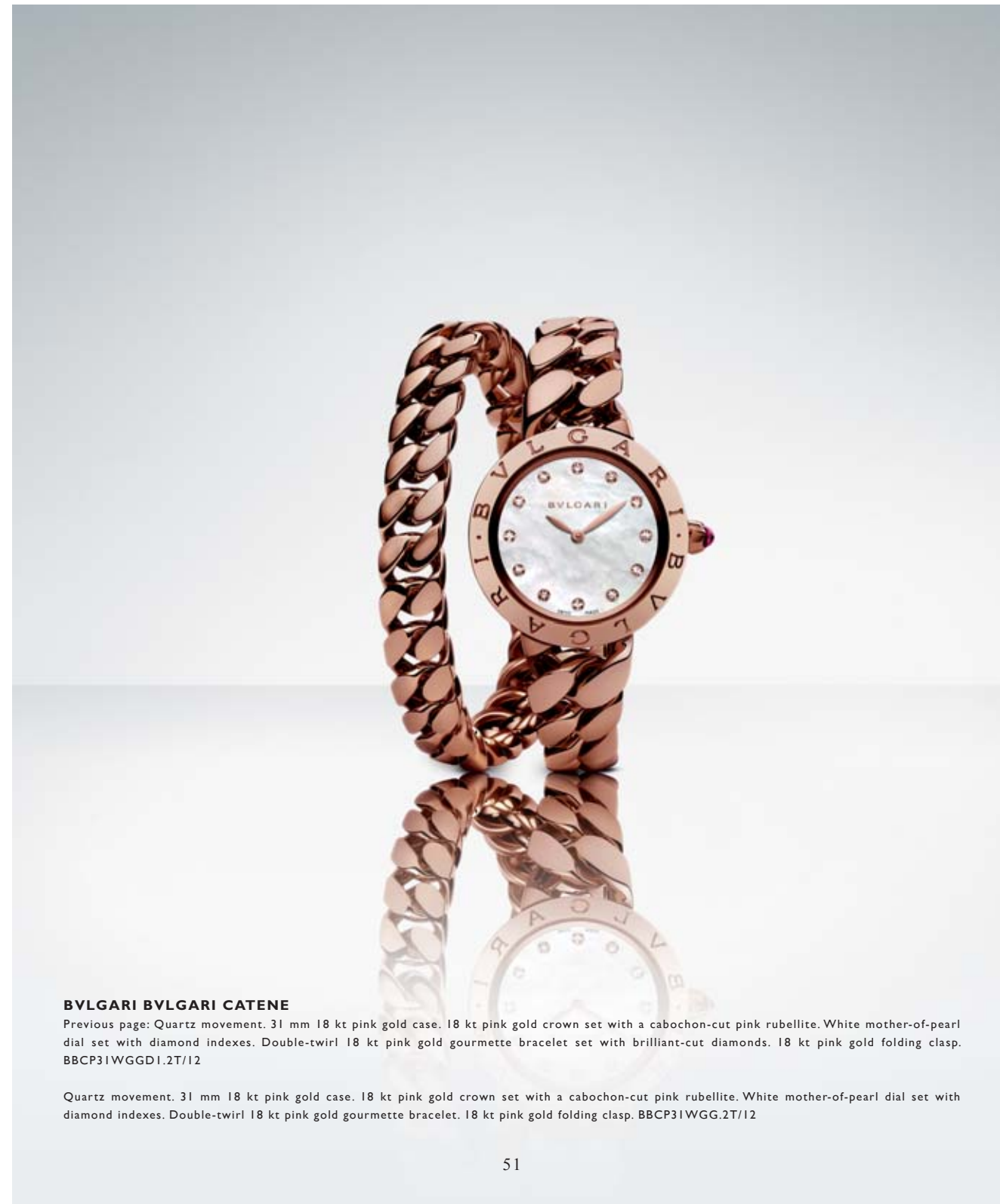
In 1977, Bulgari launched its firstborn watch, its emblematic signature foreshadowing an exceptional destiny. With a bezel bearing the double logo of the brand, the “*Bulgari Bulgari*” original made a historic entrance that has become a coveted archetype for the decades of watches to follow.

From this iconic piece Bulgari created the “*Bulgari Bulgari*” *Catene*, a precious 18 kt pink gold creation by Bulgari. Links of pink gold form the delicate band of the sophisticated timepiece, inspired by the historically classic *gourmette*. The vintage *gourmette*, French for “nameplate bracelet,” has been reinterpreted by Bulgari and restored to its former familiarity. Known to grace the wrists of goddesses such as Elizabeth Taylor, Anna Magnani and Grace Kelly, the *gourmette* is enhanced with timeliness to become the *Catene* of today. Such a sentimental symbol is now customised as a wrap-around bracelet-watch, its flexibility attributed directly to a sophisticated composition. The apparent simplicity of the timepiece’s smooth elegance does not reveal its complex construction, as the *savoir-faire* of Bulgari goldsmithing creates this supple bracelet to twice encircle the wrist.

For occasions of simple elegance, the 2014 *Catene* has been reintroduced in a single precious band. Entwined with exquisiteness, special limited editions join the collection in pieces set with coral, onyx or mother-of-pearl.

Known for taking inspiration from its history, Bulgari delights in the vintage nature of the classically playful adornment. With the revered double logo engraved on its bezel, the *Catene* watch is embellished with brilliant-cut diamond accents and the luminosity of a delicate dial. A charming expansion of the “*Bulgari Bulgari*” Collection for women, playful *Catene* is as precious as it is timely.





BVLGARI BVLGARI CATENE

Previous page: Quartz movement. 31 mm 18 kt pink gold case. 18 kt pink gold crown set with a cabochon-cut pink rubellite. White mother-of-pearl dial set with diamond indexes. Double-twirl 18 kt pink gold gourmette bracelet set with brilliant-cut diamonds. 18 kt pink gold folding clasp. BBCP31WGGDI.2T/12

Quartz movement. 31 mm 18 kt pink gold case. 18 kt pink gold crown set with a cabochon-cut pink rubellite. White mother-of-pearl dial set with diamond indexes. Double-twirl 18 kt pink gold gourmette bracelet. 18 kt pink gold folding clasp. BBCP31WGG.2T/12



BVLGARI BVLGARI CATENE

Quartz movement. 31 mm 18 kt pink gold case set with brilliant-cut diamonds. 18 kt pink gold crown set with coral, carnelian stone dial set with diamonds indexes. Single-twirl 18 kt pink gold gourmette bracelet set with corals. 18 kt pink gold folding clasp. BBP31C8DGGCO.1T/12

Quartz movement. 31 mm 18 kt pink gold case set with brilliant-cut diamonds. 18 kt pink gold crown set with a cabochon-cut pink rubellite. White mother-of-pearl dial set with diamond indexes. Single-twirl 18 kt pink gold gourmette bracelet set with brilliant cut-diamonds. 18 kt pink gold folding clasp. BBP31WGDGDI.1T/12

Next page: Quartz movement. 31 mm 18 kt pink gold case set with brilliant-cut diamonds. 18 kt pink gold crown set with an onyx. Black lacquered dial set with diamonds indexes. Double-twirl 18 kt pink gold gourmette bracelet set with black onyx and brilliant-cut diamonds. BBP31BGDO.2T/12



BVLGARI BVLGARI IL GIARDINO MARINO

Bulgari is proud to introduce its limited edition *Grandes Complications Tourbillon* watch for women, a luxurious masterpiece of colour and unparalleled craftsmanship. Inspired by the luxuriance of nature and the vivid colours that enhance our world, 2014's "*Bulgari Bulgari*" *Il Giardino Marino* pays an aquatic tribute to the sea. Swimming with precious stones, fish and sea-life reflect in coral, turquoise and mother-of pearl as they observe the beautiful motion of the tourbillon in the waters. Only 50 pieces will be made of the exclusive "*Bulgari Bulgari*" *Il Giardino Marino*, opulent as the Italian seashore.

Submerged beneath a blue lacquered *champlevé* dial, the timepiece's marquetry of sea life sparkles with 29 brilliant-cut diamonds atop its surface. With meticulous dedication, the "*Bulgari Bulgari*" *Il Giardino Marino* is a pristine example of Bulgari's finest jewellery-making and watchmaking capabilities – it takes three weeks alone to handcraft one of the dials that winds above its masterful *tourbillon* movement. The ocean life of this "maritime garden" collection brims with beauty, and Bulgari inspiration.





BVLGARI BVLGARI IL GIARDINO MARINO

Previous page: Tourbillon with sapphire bridge and champlévé dial with marquetry

Mechanical manufacture movement with automatic winding, BVL 263 caliber with see-through tourbillon and sapphire bridge. 64 hour power reserve. 37 mm 18 kt pink gold case set with brilliant-cut diamonds. 18 kt pink gold crown set with a cabochon-cut rubellite. Blue lacquered dial with fish motif of turquoise, coral, mother-of-pearl and set with brilliant-cut diamonds. Alligator strap with 18 kt pink gold ardillon buckle. BBLP37FDGDLTB

BVLGARI BVLGARI IL GIARDINO TROPICALE

Tourbillon with sapphire bridge and hand-painted dial

Mechanical manufacture movement with automatic winding, BVL 263 caliber with see-through tourbillon and sapphire bridge. 64 hour power reserve. 37 mm 18 kt pink gold case set with brilliant-cut diamonds. 18 kt pink gold crown set with a cabochon-cut rubellite. Ivory lacquered dial with parrot, flowers and leaves motifs set with brilliant-cut diamonds. Alligator strap with 18 kt pink gold ardillon buckle. BBLP37PDGDLTB

BVLGARI BVLGARI IL GIARDINO MARINO

Next page: Tourbillon with sapphire bridge and champlévé dial with marquetry

Mechanical manufacture movement with automatic winding, BVL 263 caliber with see-through tourbillon and sapphire bridge. 64 hour power reserve. 37 mm 18 kt pink gold case. 18 kt pink gold crown set with a cabochon-cut rubellite. Blue lacquered dial with fish motif of turquoise, coral, mother-of-pearl and set with brilliant-cut diamonds. Alligator strap with 18 kt pink gold ardillon buckle. BBLP37FDGLTB





BVLGARI BVLGARI
 Previous page: Mechanical movement with automatic winding. 33 mm steel case with 18 kt pink gold bezel. White mother-of-pearl dial set with diamond indexes. Steel and 18 kt pink gold bracelet. Medium model. BBL33WSPG/12

Mechanical movement with automatic winding. 33 mm 18 kt pink gold case. White mother-of-pearl dial set with diamond indexes. Beige alligator strap with 18 kt pink gold ardillon buckle. Medium model. BBLP33WGL/12

Mechanical movement with automatic winding. 33 mm 18 kt pink gold case set with brilliant-cut diamonds. White mother-of-pearl dial set with diamond indexes. White alligator strap with 18 kt pink gold ardillon buckle. Medium model. BBLP33WGDL/12



BVLGARI BVLGARI

Mechanical movement with automatic winding. 33 mm steel case with 18 kt pink gold bezel. Brown soleil lacquered dial set with diamond indexes. Steel and 18 kt pink gold bracelet. Medium model. BBL33CI1SPG/12

Mechanical movement with automatic winding. 33 mm steel case with 18 kt pink gold bezel. White lacquered dial with gold plated indexes and Roman numerals 12 and 6. Steel and 18 kt pink gold bracelet. Medium model. BBL33WSPGD



BVLGARI BVLGARI

Quartz movement. 26 mm steel case. Black lacquered dial with rhodium plated indexes and Roman numerals 12 and 6. Steel bracelet. Small model. BBL26BSSD

Mechanical movement with automatic winding. 37 mm steel case. White mother-of-pearl dial set with diamond indexes. Beige alligator strap with steel ardillon buckle. Large model. BBL37WSL/12



BVLGARI BVLGARI TUBOGAS

Quartz movement. 26 mm steel case with 18 kt pink gold bezel. White mother-of-pearl dial set with diamond indexes. Steel and 18 kt pink gold tubogas bracelet. Medium size. BBL262TWSPG/12.M

Quartz movement. 26 mm steel case. Black lacquered dial with rhodium plated indexes and Roman numerals 12 and 6. Steel tubogas bracelet. Medium size. BBL262TBSS.M



BVLGARI BVLGARI TUBOGAS

Quartz movement. 19 mm 18 kt pink gold case. Black lacquered dial set with diamond indexes. 18 kt pink gold tubogas bracelet. Small size. BBLP191TBGG/12

Quartz movement. 26 mm 18 kt pink gold case. Black lacquered dial set with diamond indexes. 18 kt pink gold tubogas bracelet. Medium size. BBLP262TBGG/12.M



B.ZERO1

Previous page: Quartz movement. 23 mm steel and 18 kt pink gold case with 18 kt pink gold bezel. Black ceramic ring. Black lacquered dial set with diamond indexes. Black ceramic bangle. Medium size. BZ23BSGCC/12.M

Quartz movement. 23 mm steel case. Black ceramic ring. Black lacquered dial. Black veal bracelet. BZ23BSCL

Quartz movement. 23 mm steel case. White ceramic ring. White lacquered dial. White ceramic bangle. Medium size. BZ23WSCC.M

